



ES3 OP - EUROSTEP3 for ac power supply input



FEATURES:

Stepping motor drive, power supply from 18 to 60 Vac, current up to 7A.
NPN/PNP optoisolated inputs and outputs compatibles with TTL (0-5V) or 12-24V level.

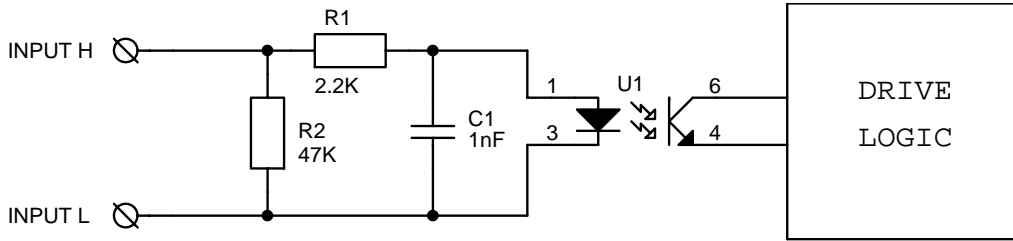
POWER SUPPLY:

DEFINITIONS

- Vac nom:** Suggested nominal voltage value with unstabilized source
Vac max: Maximum dc working voltage of the drive. Above such value, maximum voltage protection occurs, and drive working is inhibited
Vac min: Minimum dc working voltage of the drive. Below such value, minimum voltage protection occurs, and drive working is inhibited
I max: Maximum phase current
I min: Minimum phase current

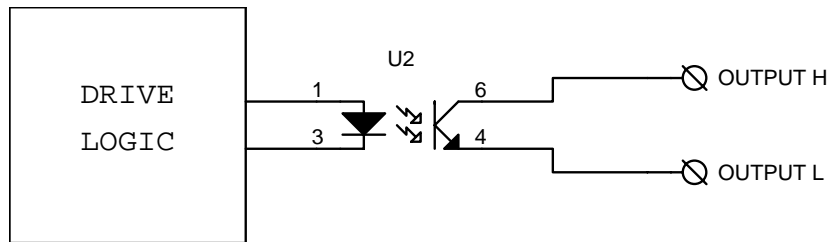
EUROSTEP		VALUES
Vac nom.	[V]	From 18 to 60
Vac max.	[V]	63
Vac min.	[V]	14
I max.	[A]	7
I min.	[A]	1
Working temperature	[°C]	0-55

INPUTS:



SIGNAL	FUNCTION
STEP-IN J2-7(L), J2-8(H)	The motor make a step at the HIGH-LOW signal transition. Best is a square wave with 50% duty-cycle. The absence of this signal for 0.5 seconds determines the intervention of the automatic current reduction (stand-by).
DIRECTION J2-5(L), J2-6(H)	Set the motor rotation direction. Signal must be stable at least 100 microseconds before and 100 after the STEP IN transition.
CURR. RED. J2-1(L), J2-1(H)	Reduce motor current. Percentage of reduction is selectable with DIP2: DIP2-1 = ON → reduct to 50% of setting current DIP2-1 = OFF → reduct to 25% of setting current NOTE: This bit set also automatic stand-by current reduction
ENABLE/ DISABLE J2-3(L), J2-4(H)	When this signal is used, the drive is inhibited by cutting off the current flowing through the motor and reset alarm condition. You can use this input as ENABLE or DISABLE, select function with JP2: JP2 Inserted in 1-2 pins → DISABLE: When input is active motor current =0. JP2 Inserted in 2-3 pins → ENABLE: When input is not active motot current=0.

OUTPUTS:



SIGNAL	FUNCTION
OUT1 J2-9(L), J2-10(H)	STEP OUT : every front is a step generated (maximum current 5 mA)
DRIVE-READY J2-11(L), J2-12(H)	DRIVER-READY Drive fault : Output disable (Low level) Drive ready : Output enabled (High level) (maximum current 5 mA)

MOTOR CURRENT REGULATION:

For setting current proceed as follows:

- Set DIP2-4 to ON (current regulation mode).
- Turn RV1 trimmer until display shows the required current (CW to increase).
- Set DIP2-4 to OFF (Run mode).

Table for setting current values and relating values shown on the display of drive:

- 1 = 1 A
- 1. = 1.5 A
- .
- .
- 7 = 7 A

RESOLUTION SETTINGS:

Resolution setting through DIP-SWITCHES:

DIP1-1	DIP1-2	DIP1-3	DIP1-4	STEPS/TOUR
OFF	OFF	OFF	OFF	200 step/rev. (full step)
ON	OFF	OFF	OFF	400 step/rev. (1 / 2 of step)
OFF	ON	OFF	OFF	800 step/rev. (1 / 4 of step)
ON	ON	OFF	OFF	1600 step/rev. (1 / 8 of step)
OFF	OFF	ON	OFF	3200 step/rev. (1 / 16 of step)
OFF	OFF	OFF	ON	500 step/rev. (1 / 2.5 of step)
ON	OFF	OFF	ON	1000 step/rev. (1 / 5 of step)
OFF	ON	OFF	ON	2000 step/rev. (1 / 10 of step)
ON	ON	OFF	ON	4000 step/rev. (1 / 20 of step)

MOTOR RESONANCE REDUCTION:

This drive is provided by an innovative system to reduce motor resonance.
To active this function set DIP2-3 ON, to disable set DIP2-3 OFF.

AUTOMATIC CURRENT REDUCTION WHEN MOTOR IS STOPPED:

The motor current is automatically reduced when motor is stopped. To change reduction value set DIP2-1:

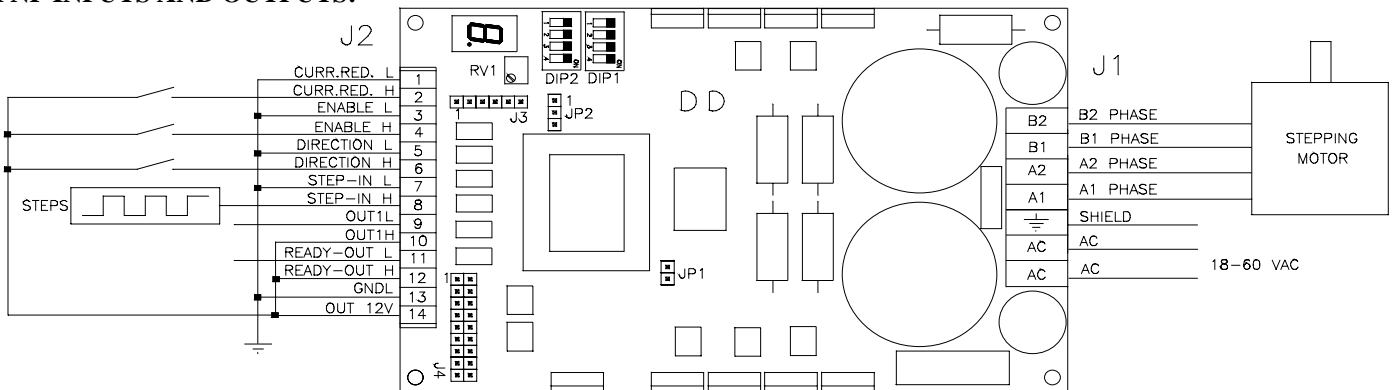
DIP2-1 = ON → don't reduce current

DIP2-1 = OFF → reduce to 25% of setting current

NOTE: This dip select also percentage of current reduction input.

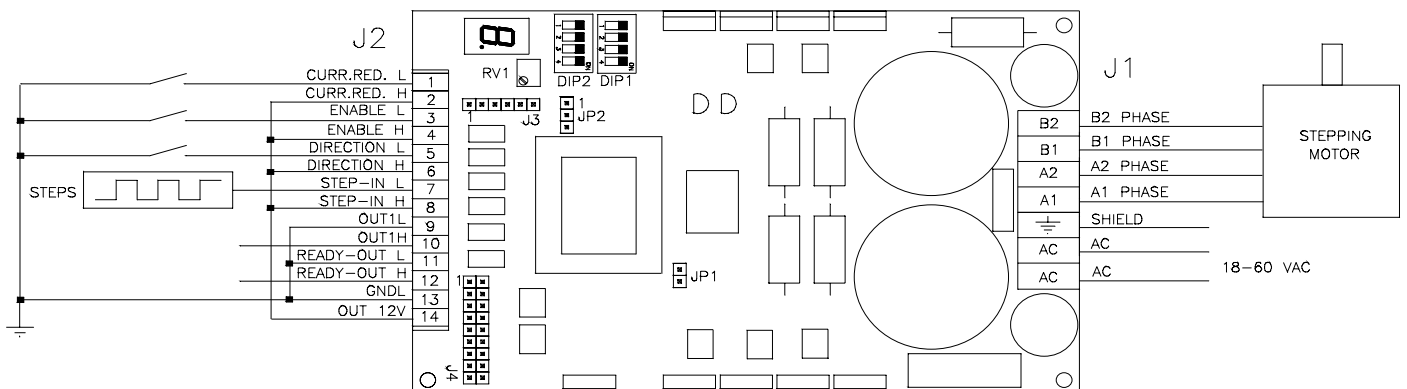
WIRING DIAGRAM

PNP INPUTS AND OUTPUTS:



In this diagram is used internal +12V but you can use an external power supply from 12 to 24 Vdc.

NPN INPUTS AND OUTPUTS:



In this diagram is used internal +12V but you can use an external power supply from 12 to 24 Vdc.

ACP&D Limited
Units 6 & 9A,
Charlestown Industrial Estate,
Robinson Street,
Ashton-under-Lyne,
Lancashire, OL6 8NS.

Tel: +44 (0)161 343 1884
Fax: +44 (0)161 339 0650
e-mail: sales@acpd.co.uk
Websites: www.acpd.com &
www.acpd.co.uk

