

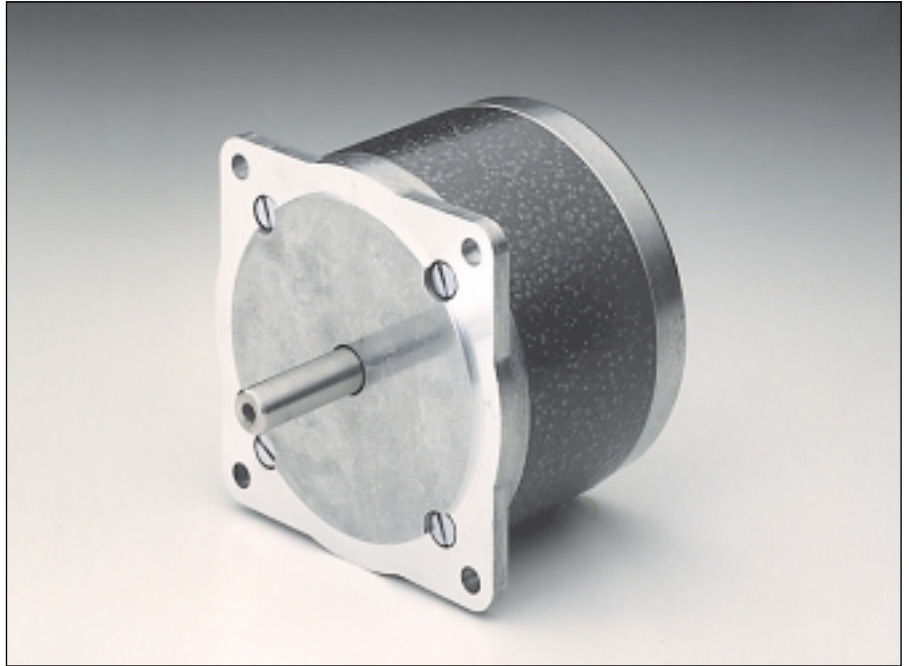
## 6530-24

**Angle de pas  
Schrittwinkel  
Step angle** 1.8 °

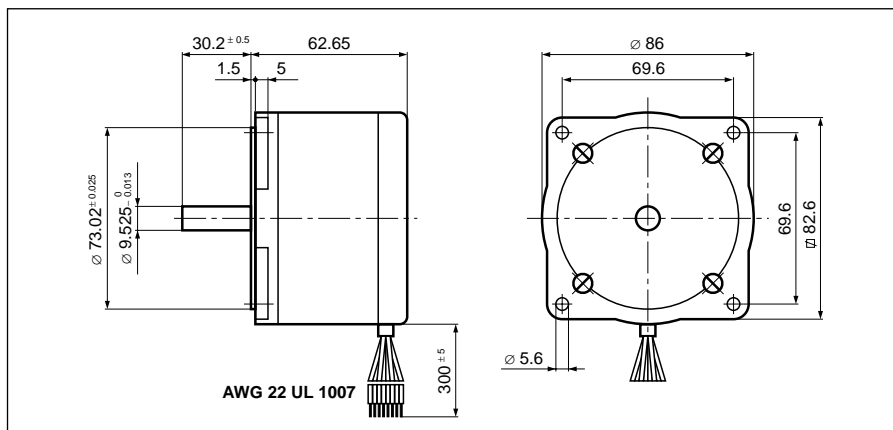
**Diamètre  
Durchmesser  
Diameter** 86 mm

**Poids  
Gewicht  
Weight** 1400 g

**Couple de retenue  
Haltemoment  
Holding torque** 1.95 Nm

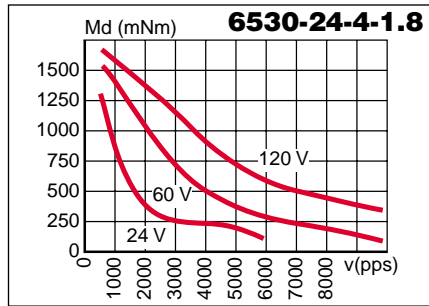
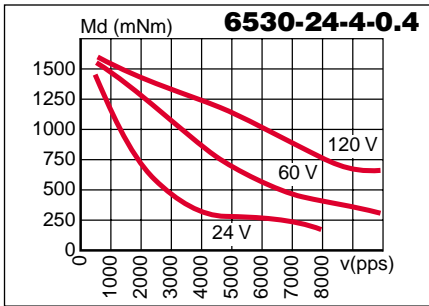


|                      |  | Résistance de phase<br>Phasenwiderstand<br>Phase resistance<br>$\Omega$ | Induct. de phase<br>Phaseninduktivität<br>Phase inductance<br>mH | Courant de phase<br>Phasenstrom<br>Phase current<br>A | Couple de retenue<br>Haltemoment<br>Holding torque<br>Nm | Puissance nominale<br>Nennleistung<br>Nominal power<br>W | <ul style="list-style-type: none"> <li><b>U<sub>1</sub></b> 1 vert / grün / green</li> <li>2 orange / orange / orange</li> <li><b>U<sub>2</sub></b> 3 noir-blanc / schwarz-weiss / black-white</li> <li>4 vert-blanc / grün-weiss / green-white</li> <li><b>U<sub>3</sub></b> 5 rouge / rot / red</li> <li>6 noir / schwarz / black</li> <li><b>U<sub>4</sub></b> 7 blanc / weiss / white</li> <li>8 rouge-blanc / rot-weiss / red-white</li> </ul> |
|----------------------|--|---|--|---|--|--|---|
| <b>6530-24-4-0.4</b> | Phases en parallèle<br>Phasen parallel<br>Phases in parallel | 0.2   | 1.0  | 6.8   | 1.95   | 18.5   |   |
| <b>6530-24-4-1.8</b> |  | 0.9   | 4.0  | 3.2   | 1.95   | 18.5   |   |
| <b>6530-24-4-0.4</b> | Phases en série<br>Phasen in Reihe<br>Phases in series       | 0.8   | 4.0  | 3.4   | 1.95   | 18.5   |   |
| <b>6530-24-4-1.8</b> |  | 3.6   | 16.4   | 1.6   | 1.95   | 18.5   |   |

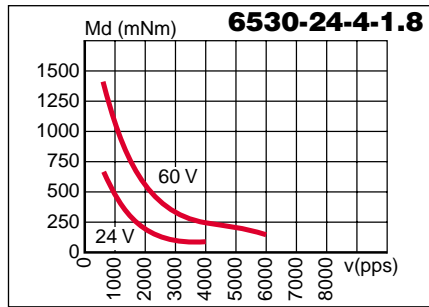
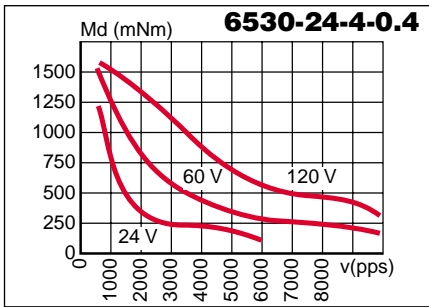


|  |                            |
|--|----------------------------|
| Pas/<br>Schritte/U<br>Steps/rev                            | <b>200</b>                 |
| Précision/pas<br>Schrittgenauigkeit<br>Step accuracy       | <b>± 5 %</b>               |
| Inertie du rotor<br>Rotorträgheitsmoment<br>Rotor inertia  | <b>770 gcm<sup>2</sup></b> |
| Classe d'isolation<br>Isolationsklasse<br>Insulation class | <b>B 130 °C</b>            |
| Protection<br>Schutzart<br>Protection                      | <b>DIN 40050<br/>IP 30</b> |
| Tension d'essai<br>Prüfspannung<br>Test voltage            | <b>500 VAC</b>             |
| Couple résiduel<br>Restmoment<br>Detent torque             | <b>75 mNm</b>              |

**Caractéristiques dynamiques**  
**Dynamische Daten**  
**Dynamic characteristics**

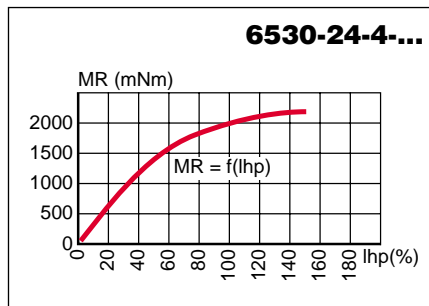


Phases en parallèle  
 Phasen parallel  
 Phases in parallel



Phases en série  
 Phasen in Reihe  
 Phases in series

**Caractéristiques statiques**  
**Statische Daten**  
**Static characteristics**



Possibilités d'exécutions adaptées sur demande.  
 Auf Wunsch werden kundenspezifische Anforderungen berücksichtigt.  
 Special requirements can be made to customer specification.

**ACP&D Limited.**  
 Unit 9A,  
 Charlestown Industrial Estate,  
 Robinson Street,  
 Ashton-under-Lyne,  
 Lancashire, OL6 8NS.

Tel: +44 (0)161 343 1884  
 Fax: +44 (0)161 339 0650  
 e-mail: sales@acpd.co.uk  
 Websites: www.acpd.com &  
 www.acpd.co.uk

