



▶ Hybrid stepper motors

6600-20

- Step angle 1.8°
- Diameter 57.2 mm
- Weight 570 g
- Holding torque 925/680 mNm

The hybrid stepper motor comes into its own where torque at low speed, positioning, and accuracy are determining factors.

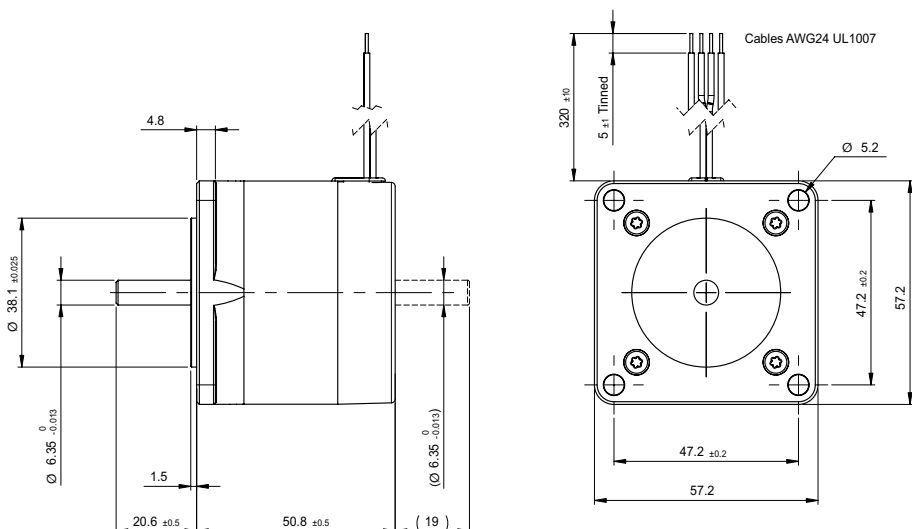
▶ Technical data

	Part N°	Phase resistance [Ω]	Phase inductance [mH]	Phase current [A]	Holding torque [mNm]	Nominal power [W]
Bipolar	6600-20-2-0.37	0.37	0.9	3.8	925	10.5
	6600-20-2-1.2	1.2	3.7	2.1	925	10.5
	6600-20-2-4.8	4.8	15	1.05	925	10.5
Unipolar	6600-20-4-0.37	0.37	0.45	3.8	680	10.5
	6600-20-4-4.8	4.8	6.5	1.05	680	10.5
	6600-20-4-25	25	33	0.46	680	10.5

Steps/rev.	200
Step accuracy	± 5 %
Rotor inertia	248 gcm ²
Insulation class	B 130° C
Protection	DIN 40050 IP 30
Test voltage	500 VAC
Detent torque	37 mNm

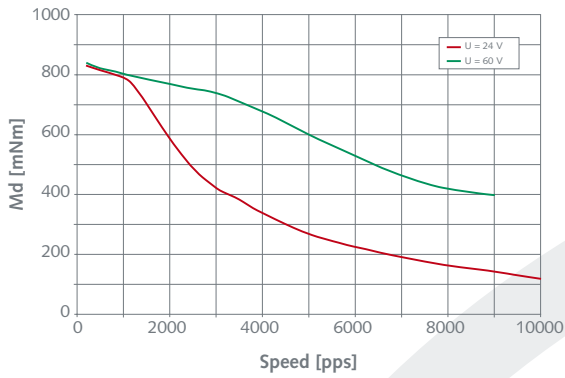
▶ Dimensions

Drawing not to scale. All dimensions in mm.

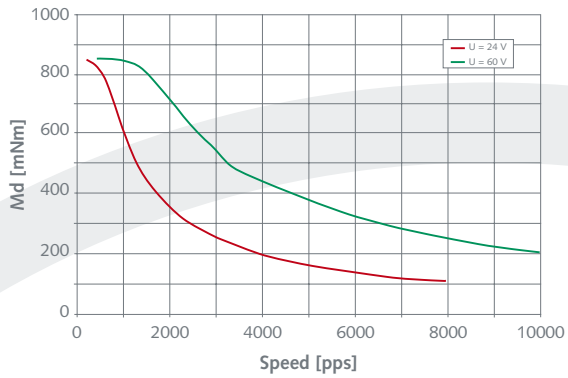


► Dynamic characteristics

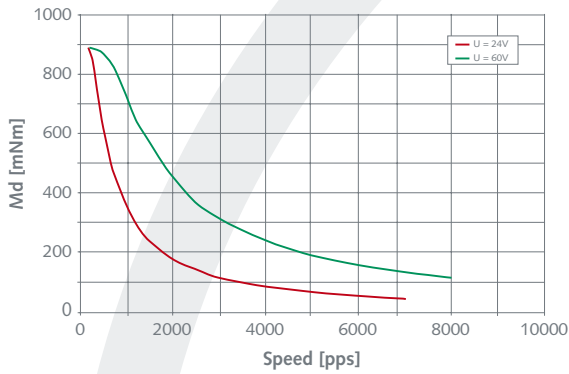
• 6600-20-2-0.37



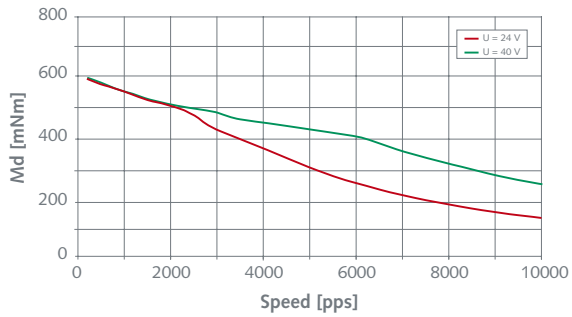
• 6600-20-2-1.2



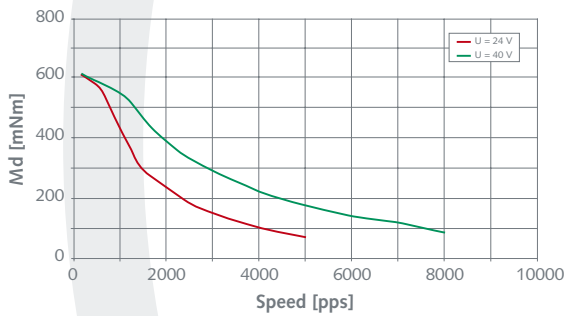
• 6600-20-2-4.8



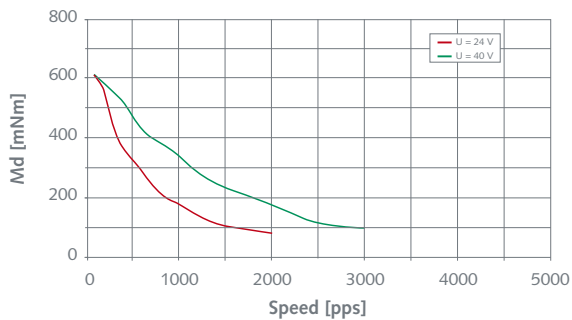
• 6600-20-4-0.37



• 6600-20-4-4.8



• 6600-20-4-25



[pps] = pulses per second

Special requirements upon customer specifications. Right to change reserved.

< 1.0 >

