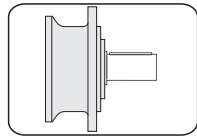


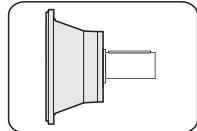
PREDISPOSIZIONI ATTACCO MOTORE  
 INPUT MOTOR ADJUSTMENTS  
 ELEKTROMORANBAU VORBEREITUNG

**PART D**



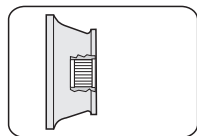
**ECR**

**D2**



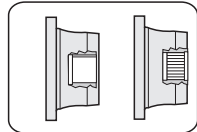
**ECE**

**D4**



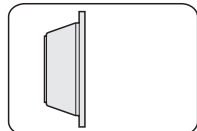
**EU**

**D6**



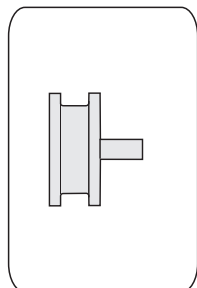
**ED**

**D8**



**PAM**

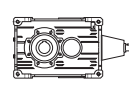
**D10**



**EXV**



**EXC**



**EXR**



**EXS**



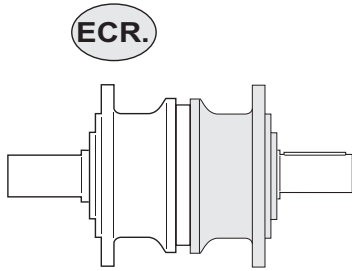
**EXO**



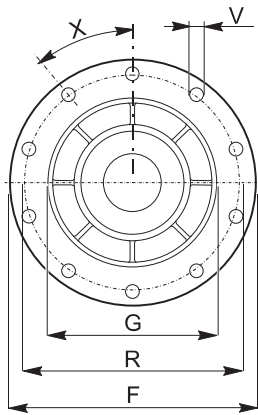
**EXA**

**D12**

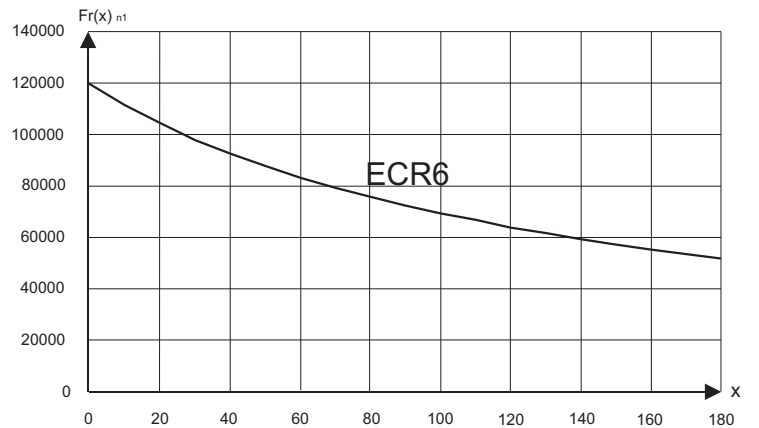
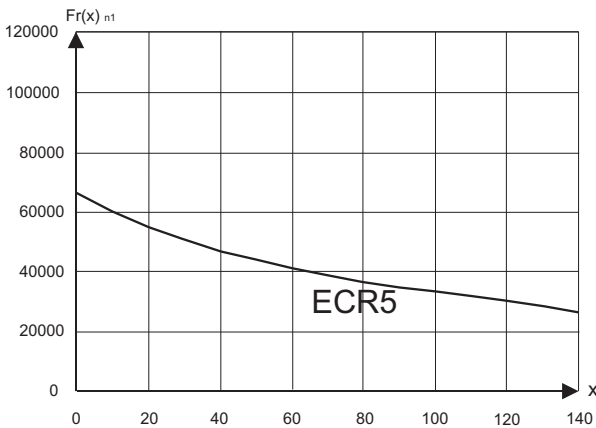
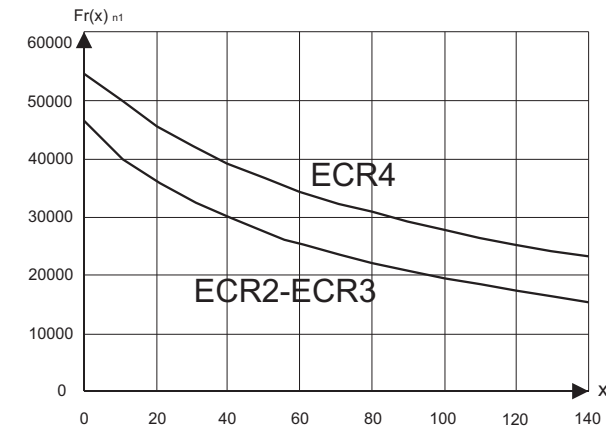
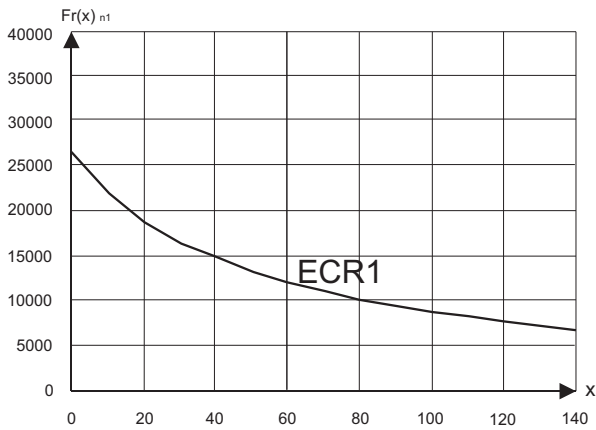
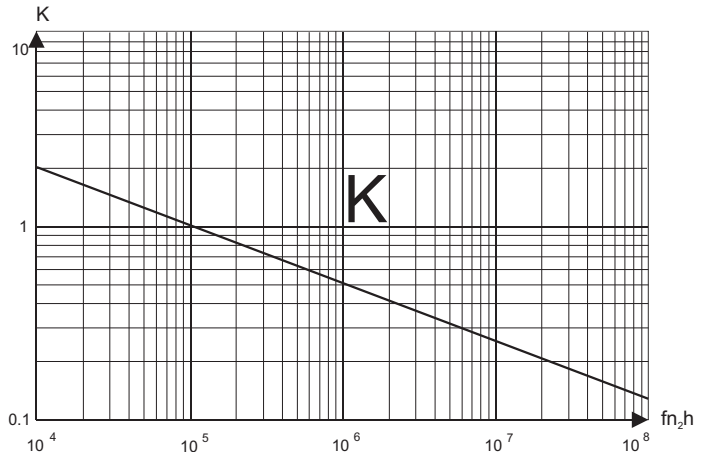
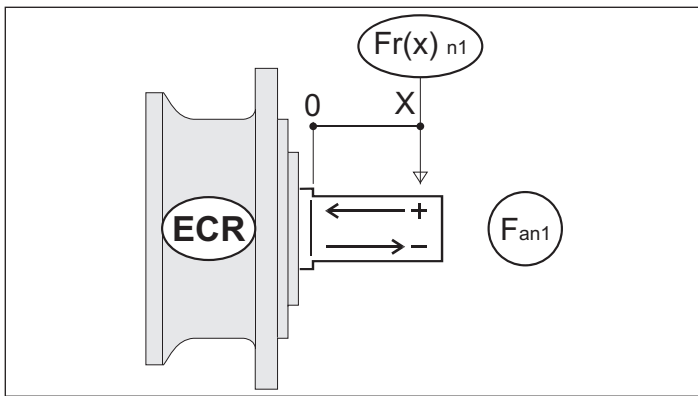
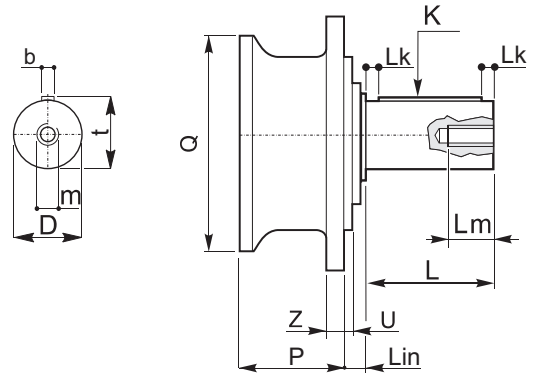
1.0 ECR



1.0 ECR



1.0 ECR



1.0 ECR

1.0 ECR

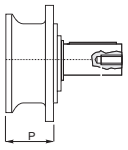
1.0 ECR

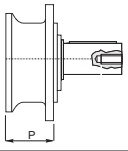
**Supporto Entrata / Input Support / Antriebslagerung**

	F	G	Lb	R	U	V	Z	X	Q
<b>ECR 1</b>	185	110	7	165	6	10.5	12	45°	186
<b>ECR 2</b>	222	150	15	195	8	12.5	16	36°	244
<b>ECR 3</b>	222	150	15	195	8	12.5	16	36°	244
<b>ECR 4</b>	272	175	39	245	10	12.5	18	36°	244
<b>ECR 5</b>	280	200	40	250	10	15	18	30°	295
<b>ECR 6</b>	325	230	36	295	15	17	22	36°	295

**Albero / Shaft / Welle**

	D h7	b	L	Lm	Lk	m	K (UNI 6604)	t
<b>ECR 1</b>	50	(UNI 6604)	82	32	6	M 16	14x9x70	(UNI 6604)
<b>ECR 2</b>	60		105	40	7.5	M 20	18x11x90	
<b>ECR 3</b>	65		105	40	7.5	M 20	18x11x90	
<b>ECR 4</b>	65		105	40	7.5	M 20	18x11x90	
<b>ECR 5</b>	80		130	40	10	M 20	22x14x110	
<b>ECR 6</b>	90		170	50	5	M 24	25x14x160	

	EX 1						EX 2					
	1	2	3	4	5	6	1	2	3	4	5	6
10	90.5	-	-	-	-	-	90.5	-	-	-	-	-
20	90.5	-	-	-	-	-	90.5	-	-	-	-	-
25	90.5	-	-	-	-	-	90.5	-	-	-	-	-
30	-	141.5	141.5	145.5	-	-	90.5	-	-	-	-	-
40	-	141.5	141.5	145.5	-	-	90.5	-	-	-	-	-
50	-	141.5	141.5	145.5	-	-	90.5	-	-	-	-	-
70	-	141.5	141.5	145.5	-	-	90.5	-	-	-	-	-
80	-	-	-	-	-	-	-	141.5	141.5	145.5	-	-
90	-	-	-	-	-	-	-	141.5	141.5	145.5	-	-
100	-	-	-	-	-	-	-	141.5	141.5	145.5	-	-
150	-	-	-	-	-	-	-	141.5	141.5	145.5	-	-
180	-	-	-	-	-	-	-	141.5	141.5	145.5	-	-
250	-	-	-	-	-	-	-	-	-	-	-	-
280	-	-	-	-	-	-	-	-	-	-	-	-

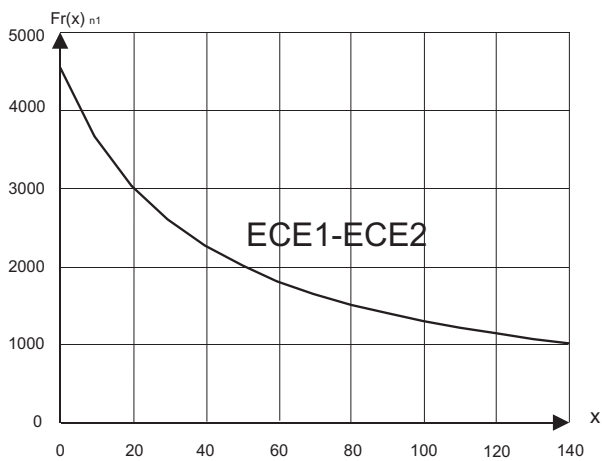
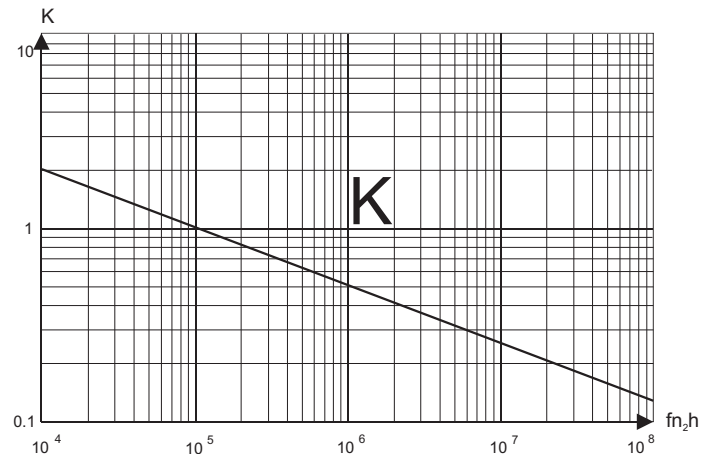
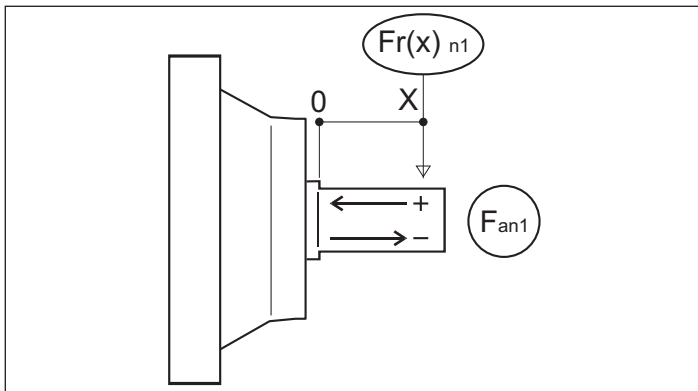
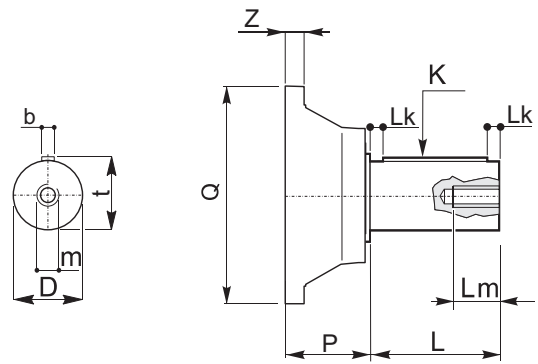
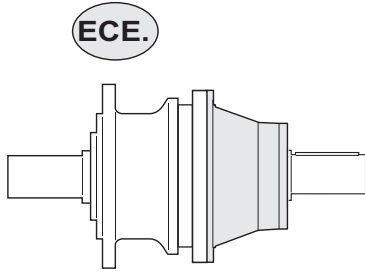
	EX 3						EX 4					
	1	2	3	4	5	6	1	2	3	4	5	6
10	90.5	-	-	-	-	-	90.5	-	-	-	-	-
20	90.5	-	-	-	-	-	90.5	-	-	-	-	-
25	90.5	-	-	-	-	-	90.5	-	-	-	-	-
30	90.5	-	-	-	-	-	90.5	-	-	-	-	-
40	90.5	-	-	-	-	-	90.5	-	-	-	-	-
50	90.5	-	-	-	-	-	90.5	-	-	-	-	-
70	90.5	-	-	-	-	-	90.5	-	-	-	-	-
80	90.5	-	-	-	-	-	90.5	-	-	-	-	-
90	90.5	-	-	-	-	-	90.5	-	-	-	-	-
100	90.5	-	-	-	-	-	90.5	-	-	-	-	-
150	90.5	-	-	-	-	-	90.5	-	-	-	-	-
180	90.5	-	-	-	-	-	90.5	-	-	-	-	-
250	-	141.5	141.5	145.5	-	-	90.5	-	-	-	-	-
280	-	141.5	141.5	145.5	-	-	90.5	-	-	-	-	-

Fa n2	Direzione Direction Drehrichtung	ECR 1	ECR 2	ECR 3	ECR 4	ECR 5	ECR 6
	(+)	22491	38557		44398	58419	104737
	(-)	19278	34426		38557	58419	73441

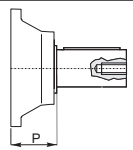
2.0 ECE

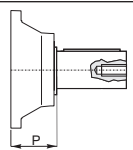
2.0 ECE

2.0 ECE



<b>Albero / shaft / welle</b>								
	D h7	b	L	Lm	Lk	m	K (UNI 6604)	t
<b>ECE 1</b>	24	(UNI 6604)	50	20	5	8	8x7x40	(UNI 6604)
<b>ECE 2</b>	38	(UNI 6604)	58	24	4	12	10x8x50	(UNI 6604)
<b>ECE 3</b>	42	(UNI 6604)	82	32	6	16	12x8x70	(UNI 6604)
<b>ECE 4</b>	48	(UNI 6604)	82	32	6	16	14x9x70	(UNI 6604)
<b>ECE 5</b>	28	(UNI 6604)	50	22	5	10	8x7x40	(UNI 6604)

	EX 1					EX 2				
	1	2	3	4	5	1	2	3	4	5
10	91	91	-	-	91	91	91	-	-	91
20	91	91	-	-	91	91	91	-	-	91
25	91	91	-	-	91	91	91	-	-	91
30	-	-	117	117	117	91	91	-	-	91
40	-	-	117	117	117	91	91	-	-	91
50	-	-	117	117	117	91	91	-	-	91
70	-	-	117	117	117	91	91	-	-	91
80	-	-	-	-	-	-	-	117	117	117
90	-	-	-	-	-	-	-	117	117	117
100	-	-	-	-	-	-	-	117	117	117
150	-	-	-	-	-	-	-	117	117	117
180	-	-	-	-	-	-	-	117	117	117
250	-	-	-	-	-	-	-	-	-	-
280	-	-	-	-	-	-	-	-	-	-

	EX 3					EX 4				
	1	2	3	4	5	1	2	3	4	5
10	91	91	-	-	91	91	91	-	-	91
20	91	91	-	-	91	91	91	-	-	91
25	91	91	-	-	91	91	91	-	-	91
30	91	91	-	-	91	91	91	-	-	91
40	91	91	-	-	91	91	91	-	-	91
50	91	91	-	-	91	91	91	-	-	91
70	91	91	-	-	91	91	91	-	-	91
80	91	91	-	-	91	91	91	-	-	91
90	91	91	-	-	91	91	91	-	-	91
100	91	91	-	-	91	91	91	-	-	91
150	91	91	-	-	91	91	91	-	-	91
180	91	91	-	-	91	91	91	-	-	91
250	-	-	117	117	117	91	91	-	-	91
280	-	-	117	117	117	91	91	-	-	91

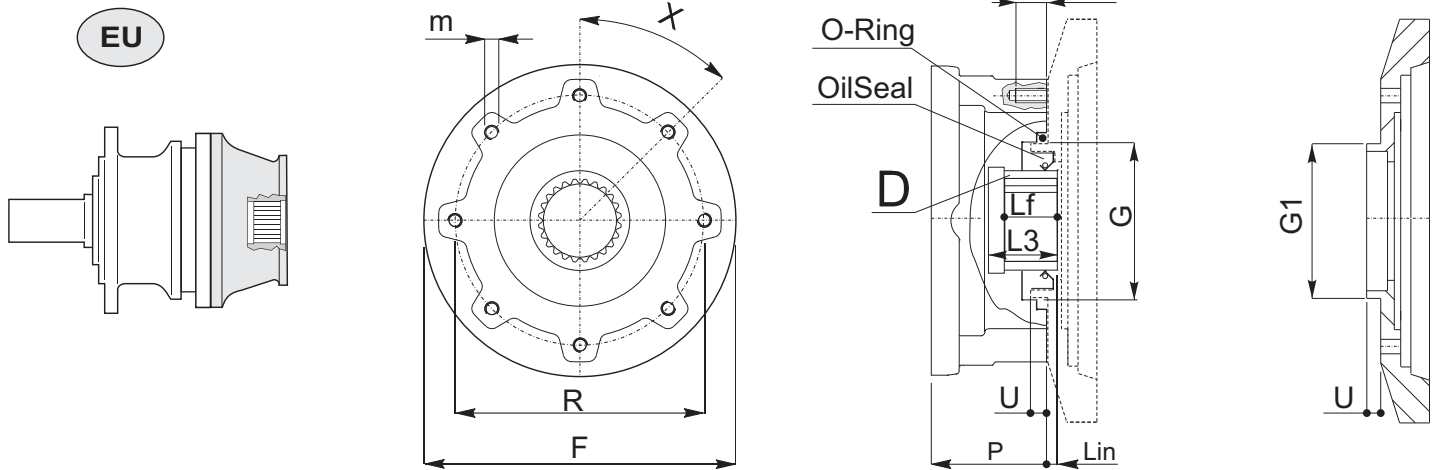
Fa <sub>n2</sub>	Direzione Direction Drehrichtung	ECE 1	ECE 2	ECE 3	ECE 4	ECE 5
	(+)	*	*	*	*	*
	(-)	*	*	*	*	*

\* Contattare nostro ufficio tecnico commerciale / \* Please, contact our technical sales dept. / \* Bitte setzen Sie sich mit unserer technischen Abteilung in Verbindung

3.0 EU

3.0 EU

3.0 EU



**Supporto Entrata / Input Support / Antriebslagerung**

	F	G ( )	G1 ( )	Lm	m	R	U max	V	Z	X	O Ring	Oil Seal
<b>EU</b>	186/244	95 (H7)	95	20	M 10	150	6	-	-	45 °	94.92 X 2.62	60 x 80 x7.5

**Albero / Shaft / Welle**

	D	Tipo	b	Lf	L3	Lin	t
<b>EU</b>	50 X 45	DIN5482	-	30	38	4	-

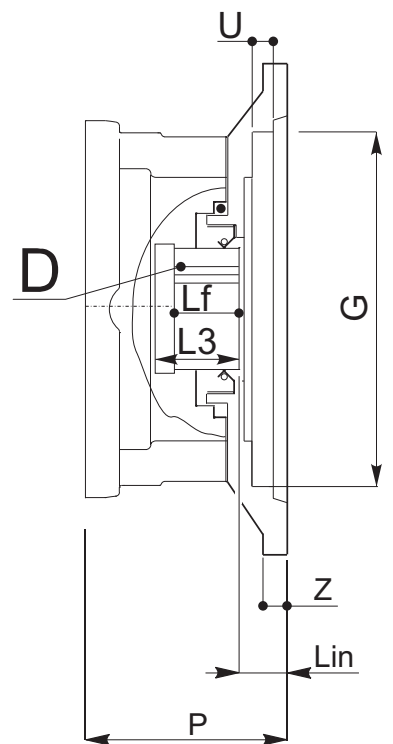
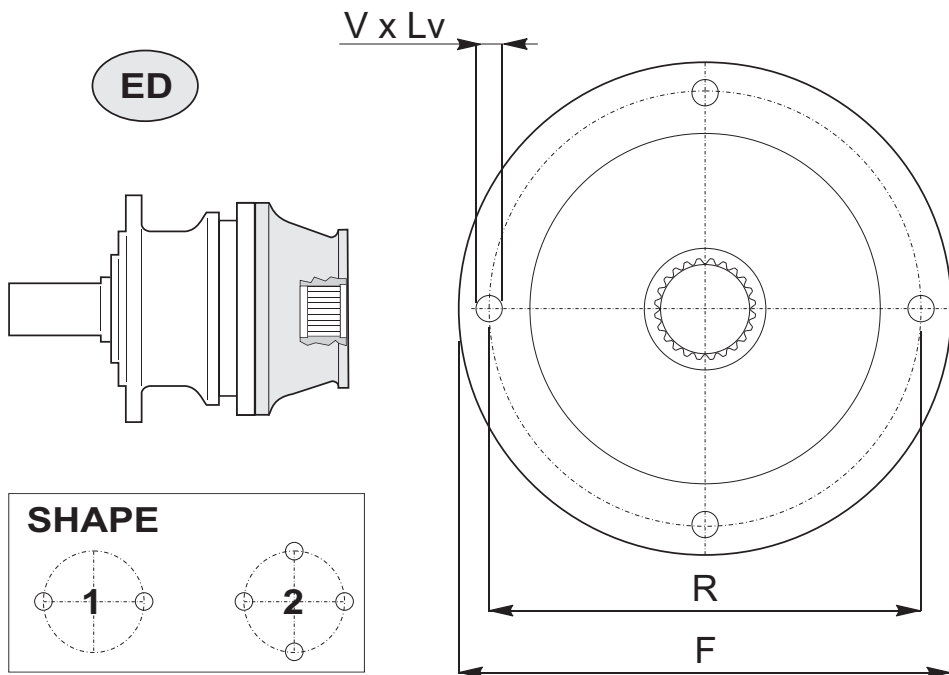
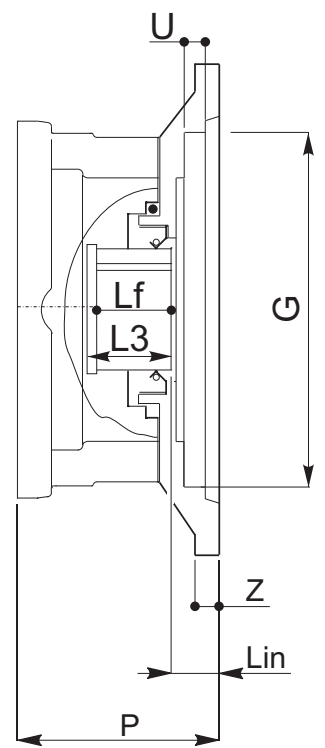
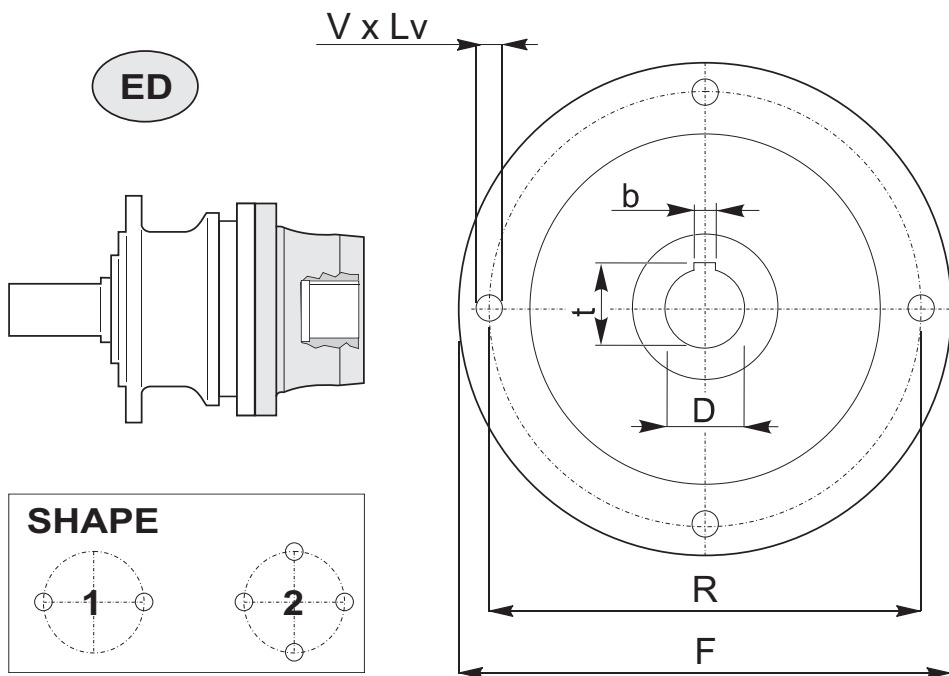
	EX 1		EX 2		EX 3		EX 4	
	P	F	P	F	P	F	P	F
10	67	186	67	186	67	186	67	186
20	67	186	67	186	67	186	67	186
25	67	186	67	186	67	186	67	186
30	75	244	67	186	67	186	67	186
40	75	244	67	186	67	186	67	186
50	75	244	67	186	67	186	67	186
70	75	244	67	186	67	186	67	186
80	-	-	75	244	67	186	67	186
90	-	-	75	244	67	186	67	186
100	-	-	75	244	67	186	67	186
150	-	-	75	244	67	186	67	186
180	-	-	75	244	67	186	67	186
250	-	-	-	-	75	244	67	186
280	-	-	-	-	75	244	67	186



4.0 ED

4.0 ED

4.0 ED



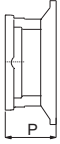


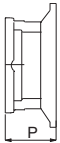
**Supporto Entrata / Input Support /Antriebslagerung**

	F	G (F8)	G1	Lm	m	R	U	V	Z	X	O Ring	Oil Seal
ED 11	130	82.55	-	17	M 12	106.4	10	-	9	-	-	-
ED 12	130	82.55	-	17	M 12	106.4	10	-	9	-	-	-
ED 15	130	82.55	-	17	M 12	106.4	10	-	9	-	-	-
ED 17	130	82.55	-	17	M 12	106.4	10	-	9	-	-	-

**Albero / Shaft / Welle**

	D	Tipo	b	Lf	L3	Lin	t	Shape
ED 11	25	UNI 6604	UNI 6604	43	43	15.5	UNI 6604	1
ED 12	25.4	-	6.35	43	44	15.5	28.3	1
ED 15	32	UNI 6604	UNI 6604	45	56	5.5	UNI 6604	1
ED 17	B92.1 12 x 24 Z12 mn 2.1167	ANSI	-	20	48	13	-	1

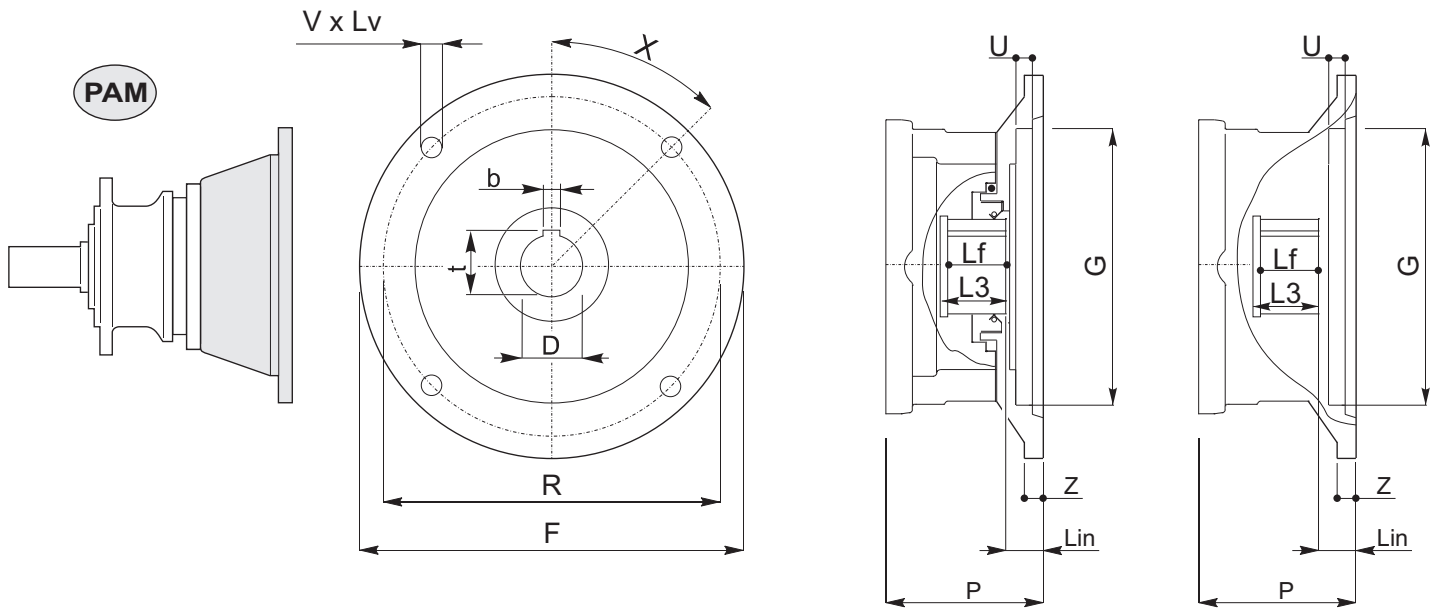
	EX 1				EX 2			
	11	12	15	17	11	12	15	17
10	93	93	93	93	93	93	93	93
20	93	93	93	93	93	93	93	93
25	93	93	93	93	93	93	93	93
30	101	101	101	-	93	93	93	93
40	101	101	101	-	93	93	93	93
50	101	101	101	-	93	93	93	93
70	101	101	101	-	93	93	93	93
80	-	-	-	-	93	93	93	93
90	-	-	-	-	93	93	93	93
100	-	-	-	-	93	93	93	93
150	-	-	-	-	93	93	93	93
180	-	-	-	-	93	93	93	93
250	-	-	-	-	101	101	101	-
280	-	-	-	-	101	101	101	-

	EX 3				EX 4			
	11	12	15	17	11	12	15	17
10	93	93	93	93	93	93	93	93
20	93	93	93	93	93	93	93	93
25	93	93	93	93	93	93	93	93
30	93	93	93	93	93	93	93	93
40	93	93	93	93	93	93	93	93
50	93	93	93	93	93	93	93	93
70	93	93	93	93	93	93	93	93
80	93	93	93	93	93	93	93	93
90	93	93	93	93	93	93	93	93
100	93	93	93	93	93	93	93	93
150	93	93	93	93	93	93	93	93
180	93	93	93	93	93	93	93	93
250	101	101	101	-	93	93	93	93
280	101	101	101	-	93	93	93	93

5.0 PAM

5.0 PAM

5.0 PAM



**Supporto Entrata/**

	F	G ( )	G1	Lm	m	R	U	V	Z	X	O Ring	Oil Seal
71 B5	160	110	-	16	-	130	6	M 8	10	45°	-	-
80 B5	200	130	-	-	-	165	5	8.5	14	45°	-	-
90 B5	200	130	-	-	-	165	5	8.5	14	45°	-	-
100-112 B5	250	180	-	-	-	215	5	10	14	45°	-	-
132 B5	300	230	-	-	-	265	5	10	14	45°	-	-
160 B5	350	250	-	-	-	300	6	14	18	45°	-	-
180 B5	350	250	-	-	-	300	6	14	18	45°	-	-
200B5	400	300	-	-	-	350	6	14	22	45°	-	-
225 B5	450	350	-	-	-	400	6	19	22	45°	-	-
250 B5	550	450	-	-	-	500	-	-	-	-	-	-
280 B5	550	450	-	-	-	500	-	-	-	-	-	-
315 B5	660	550	-	-	-	600	-	-	-	-	-	-
355 B5	800	680	-	-	-	740	-	-	-	-	-	-

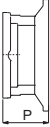
**Albero uscita / Output shaft / Abtriebswelle**

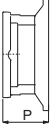
	D	Tipo	b	Lf	L3	Lin	t
71 B5	14	UNI 6604	UNI 6604	23	28	5.5	UNI 6604
80 B5	19	UNI 6604	UNI 6604	28	48	5.5	UNI 6604
90 B5	24	UNI 6604	UNI 6604	37	48	5.5	UNI 6604
100-112 B5	28	UNI 6604	UNI 6604	38	51	10.5	UNI 6604
132 B5	38	UNI 6604	UNI 6604	57	72	10.5	UNI 6604
160 B5	42	UNI 6604	UNI 6604	84	103	8.5	UNI 6604
180 B5	48	UNI 6604	UNI 6604	84	103	8.5	UNI 6604
200B5	55	UNI 6604	UNI 6604	83	111.5	8.5	UNI 6604
225 B5	60	UNI 6604	UNI 6604	120	146.5	8.5	UNI 6604
250 B5	-	-	-	-	-	-	-
280 B5	-	-	-	-	-	-	-
315 B5	-	-	-	-	-	-	-
355 B5	-	-	-	-	-	-	-

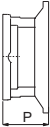
5.0 PAM


5.0 PAM

5.0 PAM

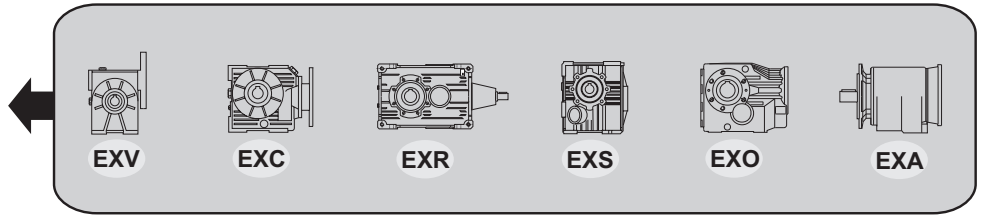
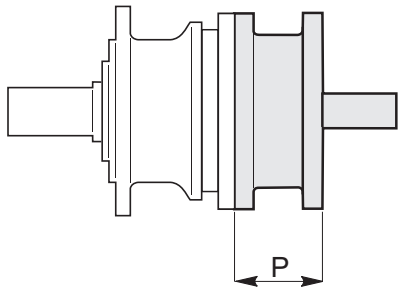
	EX 1												
	71 B5	80 B5	90 B5	100-112 B5	132 B5	160 B5	180 B5	200B5	225 B5	250 B5	280 B5	315 B5	355 B5
10	83	83	83	91	112	146	146	-	-	-	-	-	-
20	83	83	83	91	112	146	146	-	-	-	-	-	-
25	83	83	83	91	112	146	146	-	-	-	-	-	-
30	91	91	91	99	120	146	146	154	189	-	-	-	-
40	91	91	91	99	120	146	146	154	189	-	-	-	-
50	91	91	91	99	120	146	146	154	189	-	-	-	-
70	91	91	91	99	120	146	146	154	189	-	-	-	-
80	-	-	-	-	-	-	-	-	-	-	-	-	-
90	-	-	-	-	-	-	-	-	-	-	-	-	-
100	-	-	-	-	-	-	-	-	-	-	-	-	-
150	-	-	-	-	-	-	-	-	-	-	-	-	-
180	-	-	-	-	-	-	-	-	-	-	-	-	-
250	-	-	-	-	-	-	-	-	-	-	-	-	-
280	-	-	-	-	-	-	-	-	-	-	-	-	-

	EX 2												
	71 B5	80 B5	90 B5	100-112 B5	132 B5	160 B5	180 B5	200B5	225 B5	250 B5	280 B5	315 B5	355 B5
10	83	83	83	91	112	146	146	-	-	-	-	-	-
20	83	83	83	91	112	146	146	-	-	-	-	-	-
25	83	83	83	91	112	146	146	-	-	-	-	-	-
30	83	83	83	91	112	146	146	-	-	-	-	-	-
40	83	83	83	91	112	146	146	-	-	-	-	-	-
50	83	83	83	91	112	146	146	-	-	-	-	-	-
70	83	83	83	91	112	146	146	-	-	-	-	-	-
80	91	91	91	99	120	146	146	154	189	-	-	-	-
90	91	91	91	99	120	146	146	154	189	-	-	-	-
100	91	91	91	99	120	146	146	154	189	-	-	-	-
150	91	91	91	99	120	146	146	154	189	-	-	-	-
180	91	91	91	99	120	146	146	154	189	-	-	-	-
250	-	-	-	-	-	-	-	-	-	-	-	-	-
280	-	-	-	-	-	-	-	-	-	-	-	-	-

	EX 3												
	71 B5	80 B5	90 B5	100-112 B5	132 B5	160 B5	180 B5	200B5	225 B5	250 B5	280 B5	315 B5	355 B5
10	83	83	83	91	112	146	146	-	-	-	-	-	-
20	83	83	83	91	112	146	146	-	-	-	-	-	-
25	83	83	83	91	112	146	146	-	-	-	-	-	-
30	83	83	83	91	112	146	146	-	-	-	-	-	-
40	83	83	83	91	112	146	146	-	-	-	-	-	-
50	83	83	83	91	112	146	146	-	-	-	-	-	-
70	83	83	83	91	112	146	146	-	-	-	-	-	-
80	83	83	83	91	112	146	146	-	-	-	-	-	-
90	83	83	83	91	112	146	146	-	-	-	-	-	-
100	83	83	83	91	112	146	146	-	-	-	-	-	-
150	83	83	83	91	112	146	146	-	-	-	-	-	-
180	83	83	83	91	112	146	146	-	-	-	-	-	-
250	91	91	91	99	120	146	146	154	189	-	-	-	-
280	91	91	91	99	120	146	146	154	189	-	-	-	-

	EX 4												
	71 B5	80 B5	90 B5	100-112 B5	132 B5	160 B5	180 B5	200B5	225 B5	250 B5	280 B5	315 B5	355 B5
10	83	83	83	91	112	146	146	-	-	-	-	-	-
20	83	83	83	91	112	146	146	-	-	-	-	-	-
25	83	83	83	91	112	146	146	-	-	-	-	-	-
30	83	83	83	91	112	146	146	-	-	-	-	-	-
40	83	83	83	91	112	146	146	-	-	-	-	-	-
50	83	83	83	91	112	146	146	-	-	-	-	-	-
70	83	83	83	91	112	146	146	-	-	-	-	-	-
80	83	83	83	91	112	146	146	-	-	-	-	-	-
90	83	83	83	91	112	146	146	-	-	-	-	-	-
100	83	83	83	91	112	146	146	-	-	-	-	-	-
150	83	83	83	91	112	146	146	-	-	-	-	-	-
180	83	83	83	91	112	146	146	-	-	-	-	-	-
250	83	83	83	91	112	146	146	-	-	-	-	-	-
280	83	83	83	91	112	146	146	-	-	-	-	-	-

EX.



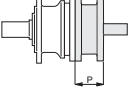
		EXV								EXC				EXS		EXR				EXO				EXA			
		50	63	70	85	110	130	150	180	50	70	85	110	35	45	704	708	712	716	132	150	170	190	35	41	45	50
EX 1	10	60.5		45.5	62.5	-	-	-	-				47			64.5	-	-	-	-	-	-					
	20	60.5		45.5	62.5	-	-	-	-				47			64.5	-	-	-	-	-	-					
	25	60.5		45.5	62.5	-	-	-	-				47			64.5	-	-	-	-	-	-					
	30	-	-	-	95	80		-	-	-			-	-	-		83.5	-	-	-	-	-	-	-	-	-	
	40	-	-	-	95	80		-	-	-			-	-	-		83.5	-	-	-	-	-	-	-	-	-	
	50	-	-	-	95	80		-	-	-			-	-	-		83.5	-	-	-	-	-	-	-	-	-	
	70	-	-	-	95	80		-	-	-			-	-	-		83.5	-	-	-	-	-	-	-	-	-	
	80	-	-	-	-			-	-	-			-	-	-												
	90	-	-	-	-			-	-	-			-	-	-												
	100	-	-	-	-			-	-	-			-	-	-												
	150	-	-	-	-			-	-	-			-	-	-												
	180	-	-	-	-			-	-	-			-	-	-												
	250	-	-	-	-			-	-	-			-	-	-												
	280	-	-	-	-			-	-	-			-	-	-												

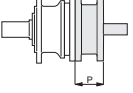
		EXV								EXC				EXS		EXR				EXO				EXA			
		50	63	70	85	110	130	150	180	50	70	85	110	35	45	704	708	712	716	132	150	170	190	35	41	45	50
EX 2	10	60.5		45.5	62.5	-	-	-	-				47														
	20	60.5		45.5	62.5	-	-	-	-				47														
	25	60.5		45.5	62.5	-	-	-	-				47														
	30	60.5		45.5	62.5	-	-	-	-				47														
	40	60.5		45.5	62.5	-	-	-	-				47														
	50	60.5		45.5	62.5	-	-	-	-				47														
	70	60.5		45.5	62.5	-	-	-	-				47														
	80	-	-	-	95	80		-	-	-			-	-	-	95	83.5	-	-	-	-	-	-	-	-	-	
	90	-	-	-	95	80		-	-	-			-	-	-	95	83.5	-	-	-	-	-	-	-	-	-	
	100	-	-	-	95	80		-	-	-			-	-	-	95	83.5	-	-	-	-	-	-	-	-	-	
	150	-	-	-	95	80		-	-	-			-	-	-	95	83.5	-	-	-	-	-	-	-	-	-	
	180	-	-	-	95	80		-	-	-			-	-	-	95	83.5	-	-	-	-	-	-	-	-	-	
	250	-	-	-	-			-	-	-			-	-	-												
	280	-	-	-	-			-	-	-			-	-	-												

6.0 EXV-EXC-EXS-EXR-EXO-EXA

6.0 EXV-EXC-EXS-EXR-EXO-EXA

6.0 EXV-EXC-EXS-EXR-EXO-EXA

	EXV								EXC				EXS		EXR				EXO			EXA				
	50	63	70	85	110	130	150	180	50	70	85	110	35	45	704	708	712	716	132	150	170	190	35	41	45	50
EX 3	10	60.5		45.5	62.5	-	-	-	-			-	47			64.5	-	-	-	-	-	-				
	20	60.5		45.5	62.5	-	-	-	-			-	47			64.5	-	-	-	-	-	-				
	25	60.5		45.5	62.5	-	-	-	-			-	47			64.5	-	-	-	-	-	-				
	30	60.5		45.5	62.5	-	-	-	-			-	47			64.5	-	-	-	-	-	-				
	40	60.5		45.5	62.5	-	-	-	-			-	47			64.5	-	-	-	-	-	-				
	50	60.5		45.5	62.5	-	-	-	-			-	47			64.5	-	-	-	-	-	-				
	70	60.5		45.5	62.5	-	-	-	-			-	47			64.5	-	-	-	-	-	-				
	80	60.5		45.5	62.5	-	-	-	-			-	47			64.5	-	-	-	-	-	-				
	90	60.5		45.5	62.5	-	-	-	-			-	47			64.5	-	-	-	-	-	-				
	100	60.5		45.5	62.5	-	-	-	-			-	47			64.5	-	-	-	-	-	-				
	150	60.5		45.5	62.5	-	-	-	-			-	47			64.5	-	-	-	-	-	-				
	180	60.5		45.5	62.5	-	-	-	-			-	47			64.5	-	-	-	-	-	-				
	250	-	-	-	95	80								-	-	-	95	83.5	-	-	-	-	-	-	-	-
	280	-	-	-	95	80								-	-	-	95	83.5	-	-	-	-	-	-	-	-

	EXV								EXC				EXS		EXR				EXO			EXA				
	50	63	70	85	110	130	150	180	50	70	85	110	35	45	704	708	712	716	132	150	170	190	35	41	45	50
EX 4	10	60.5		45.5	62.5	-	-	-	-			-	47			64.5	-	-	-	-	-	-				
	20	60.5		45.5	62.5	-	-	-	-			-	47			64.5	-	-	-	-	-	-				
	25	60.5		45.5	62.5	-	-	-	-			-	47			64.5	-	-	-	-	-	-				
	30	60.5		45.5	62.5	-	-	-	-			-	47			64.5	-	-	-	-	-	-				
	40	60.5		45.5	62.5	-	-	-	-			-	47			64.5	-	-	-	-	-	-				
	50	60.5		45.5	62.5	-	-	-	-			-	47			64.5	-	-	-	-	-	-				
	70	60.5		45.5	62.5	-	-	-	-			-	47			64.5	-	-	-	-	-	-				
	80	60.5		45.5	62.5	-	-	-	-			-	47			64.5	-	-	-	-	-	-				
	90	60.5		45.5	62.5	-	-	-	-			-	47			64.5	-	-	-	-	-	-				
	100	60.5		45.5	62.5	-	-	-	-			-	47			64.5	-	-	-	-	-	-				
	150	60.5		45.5	62.5	-	-	-	-			-	47			64.5	-	-	-	-	-	-				
	180	60.5		45.5	62.5	-	-	-	-			-	47			64.5	-	-	-	-	-	-				
	250	60.5		45.5	62.5	-	-	-	-			-	47			64.5	-	-	-	-	-	-				
	280	60.5		45.5	62.5	-	-	-	-			-	47			64.5	-	-	-	-	-	-				
	300	60.5		45.5	62.5	-	-	-	-			-	47			64.5	-	-	-	-	-	-				