

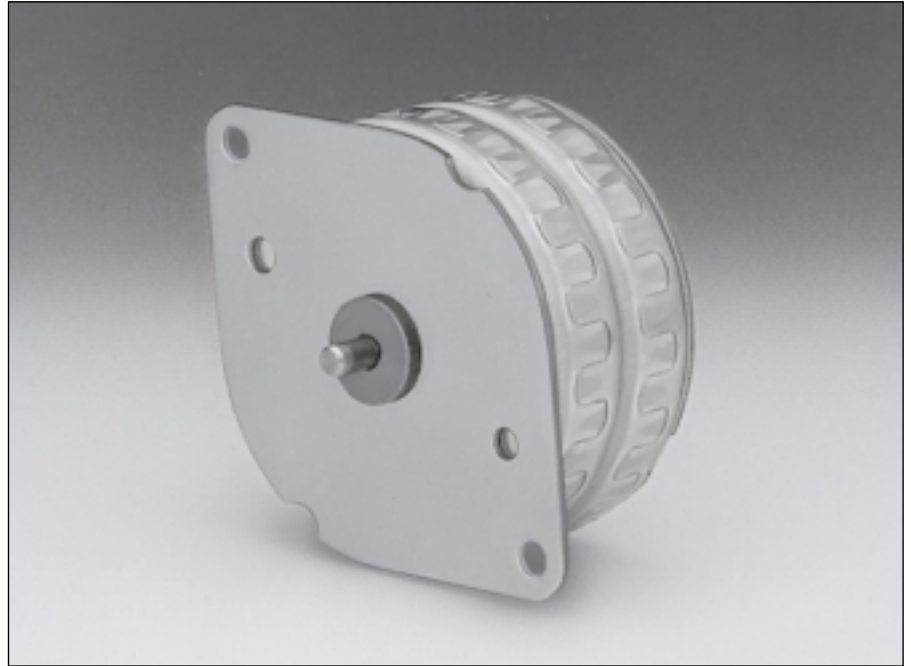
## 6231 H

**Angle de pas  
Schrittwinkel  
Step angle** 7.5 °

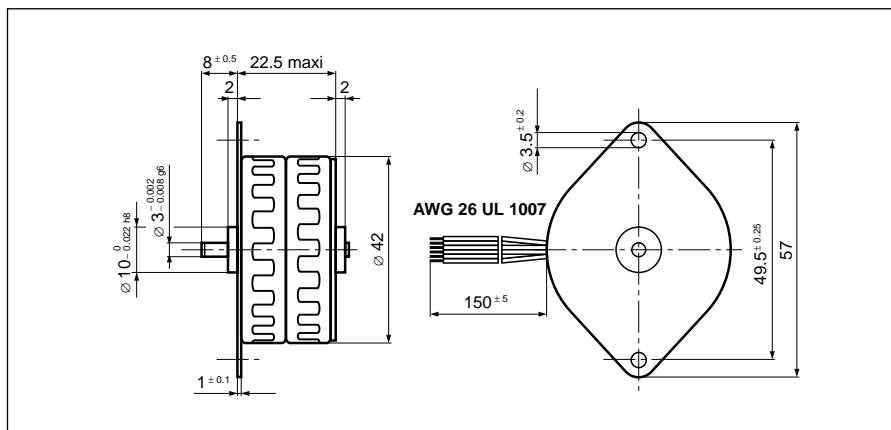
**Diamètre  
Durchmesser  
Diameter** 42 mm

**Poids  
Gewicht  
Weight** 120 g

**Couple de retenue  
Haltemoment  
Holding torque** 75/61 mNm

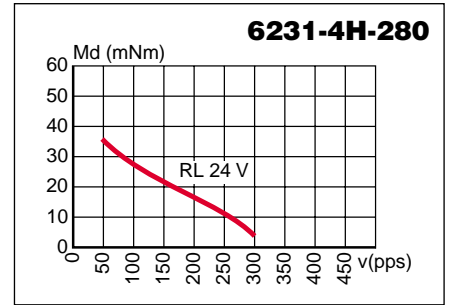
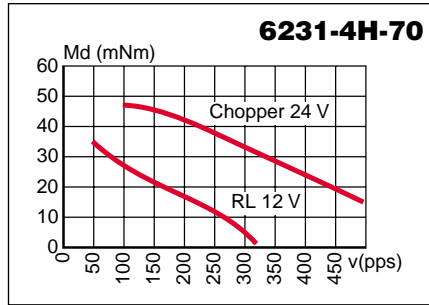
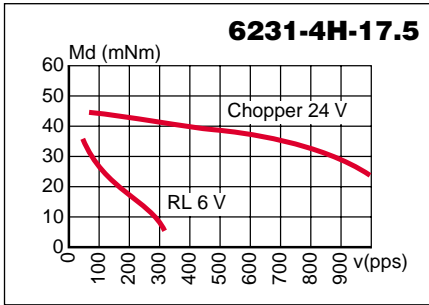
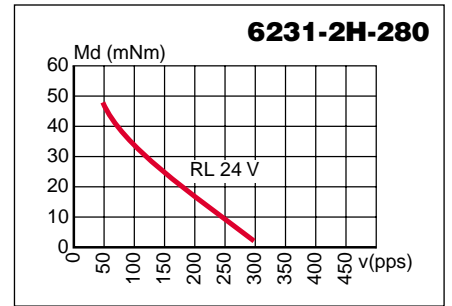
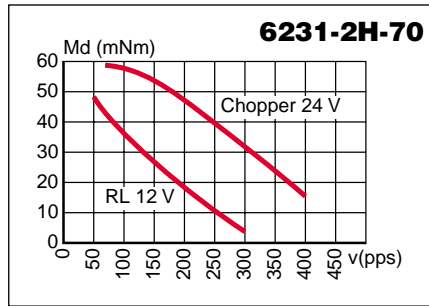
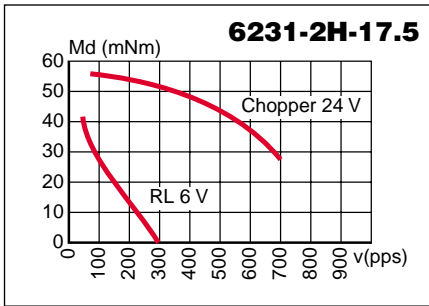


		Résistance de phase Phasenwiderstand Phase resistance $\Omega$	Induct. de phase Phaseninduktivität Phase inductance mH	Courant de phase Phasenstrom Phase current A	Couple de retenue Haltemoment Holding torque mNm	Puissance nominale Nennleistung Nominal power W	Code câble Kabelcode Cable-code	
<b>bipolar</b>	<b>6231-2H-17.5</b>	17.5	23	0.34	75	4	rouge rot red	
	<b>6231-2H-70</b>	70	94	0.17	75	4	bleu blau blue	
	<b>6231-2H-280</b>	280	388	0.085	75	4	vert grün green	
<b>unipolar</b>	<b>6231-4H-17.5</b>	17.5	12	0.34	61	4	rouge rot red	
	<b>6231-4H-70</b>	70	53	0.17	61	4	bleu blau blue	
	<b>6231-4H-280</b>	280	218	0.085	61	4	vert grün green	

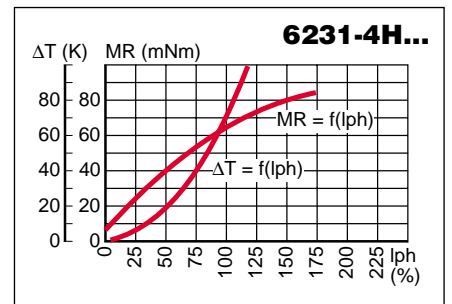
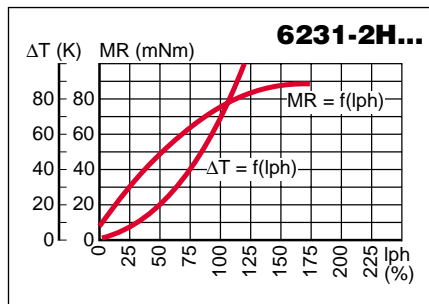


Pas/ Schritte/U Steps/rev	<b>48</b>
Précision/pas Schrittgenauigkeit Step accuracy	<b>± 7 %</b>
Inertie du rotor Rotorträgheitsmoment Rotor inertia	<b>12 gcm<sup>2</sup></b>
Classe d'isolation Isolationsklasse Insulation class	<b>E 120 °C</b>
Protection Schutzart Protection	<b>DIN 40050 IP 30</b>
Tension d'essai Prüfspannung Test voltage	<b>500 VAC</b>
Couple résiduel Restmoment Detent torque	<b>7.5 mNm</b>

**Caractéristiques dynamiques**  
**Dynamische Daten**  
**Dynamic characteristics**



**Caractéristiques statiques**  
**Statische Daten**  
**Static characteristics**



Possibilités d'exécutions adaptées sur demande.  
 Auf Wunsch werden kundenspezifische Anforderungen berücksichtigt.  
 Special requirements can be made to customer specification.

**ACP&D Limited.**  
 Unit 9A,  
 Charlestown Industrial Estate,  
 Robinson Street,  
 Ashton-under-Lyne,  
 Lancashire, OL6 8NS.

Tel: +44 (0)161 343 1884  
 Fax: +44 (0)161 339 0650  
 e-mail: sales@acpd.co.uk  
 Websites: www.acpd.com &  
 www.acpd.co.uk

