

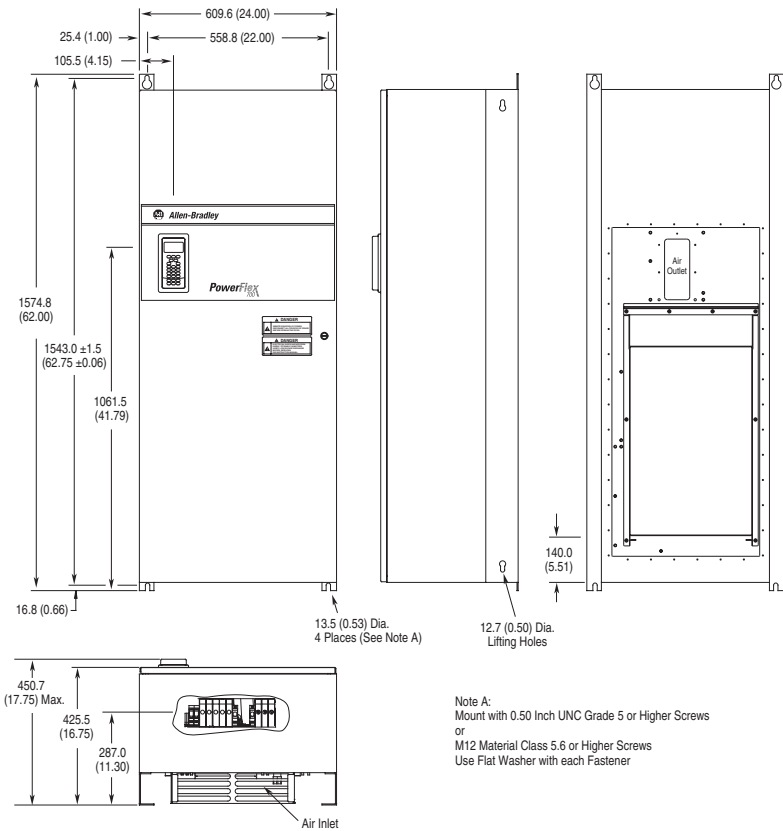


PowerFlex 700 User Manual Update

This document provides new information for the PowerFlex 700 Series B User Manual (publication 20B-UM002A-EN-P). Included is new information pertaining to Frames 5 & 6, NEMA Type 12 drives. Place this document with your User Manual for future reference.

Dimensions

Figure 1 Frame 5 NEMA Type 12 Standalone

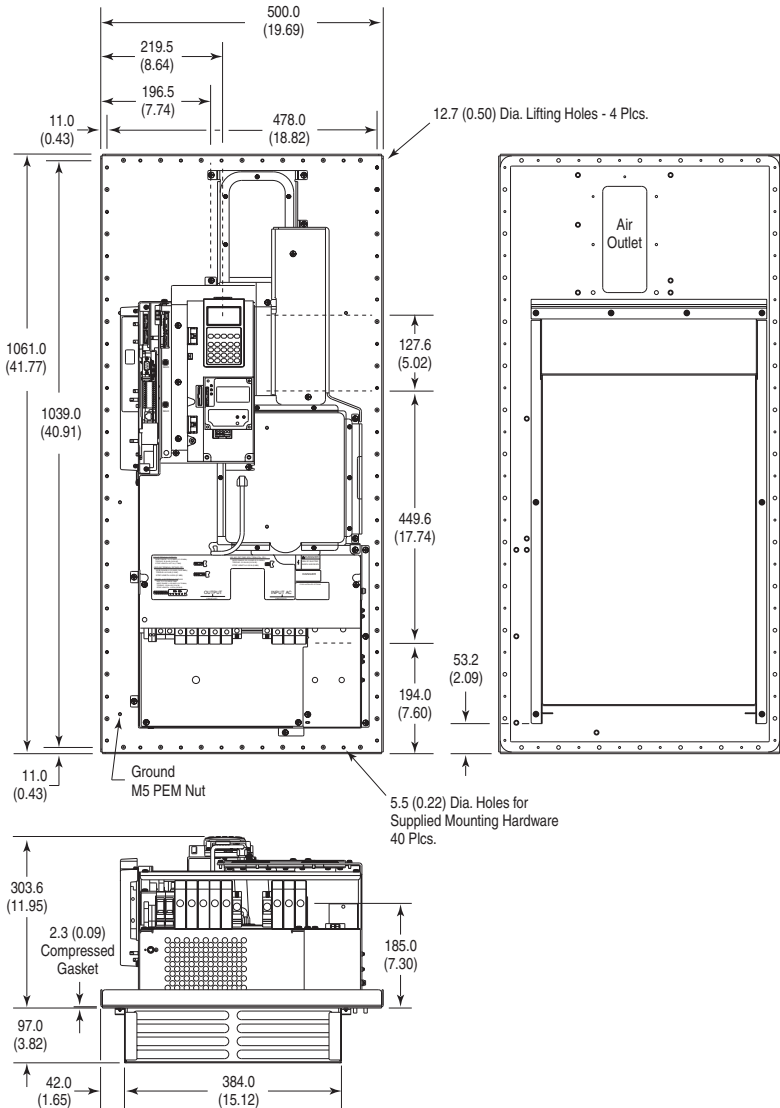


Dimensions are in millimeters and (inches)

Frame	Description	Approx. Weight ⁽¹⁾ kg (lbs.)	
		Drive	Drive & Packaging
5	Standalone	102.51 (226.0)	154.68 (341.0)

(1) Weights include HIM and Standard I/O.

Figure 2 Frame 5 NEMA Type 12 Flange Mount

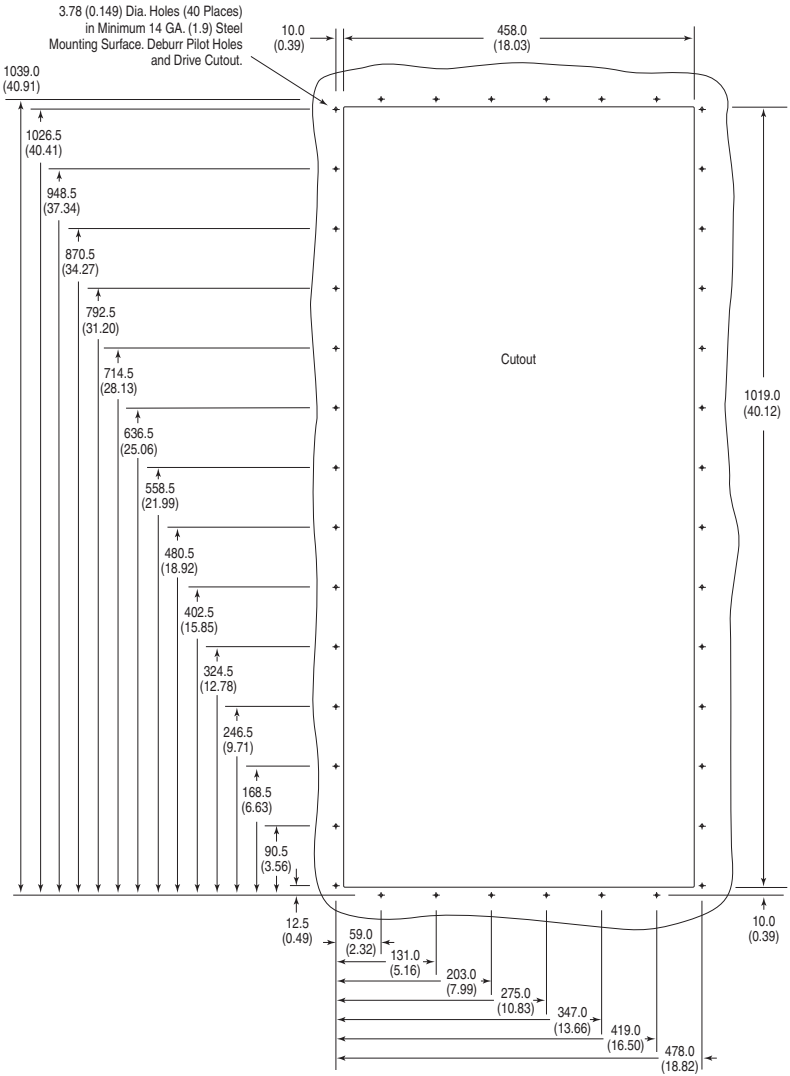


Dimensions are in millimeters and (inches)

Frame	Description	Approx. Weight ⁽¹⁾ kg (lbs.)	
		Drive	Drive & Packaging
5	Flange Mount	61.69 (136.0)	81.65 (180.0)

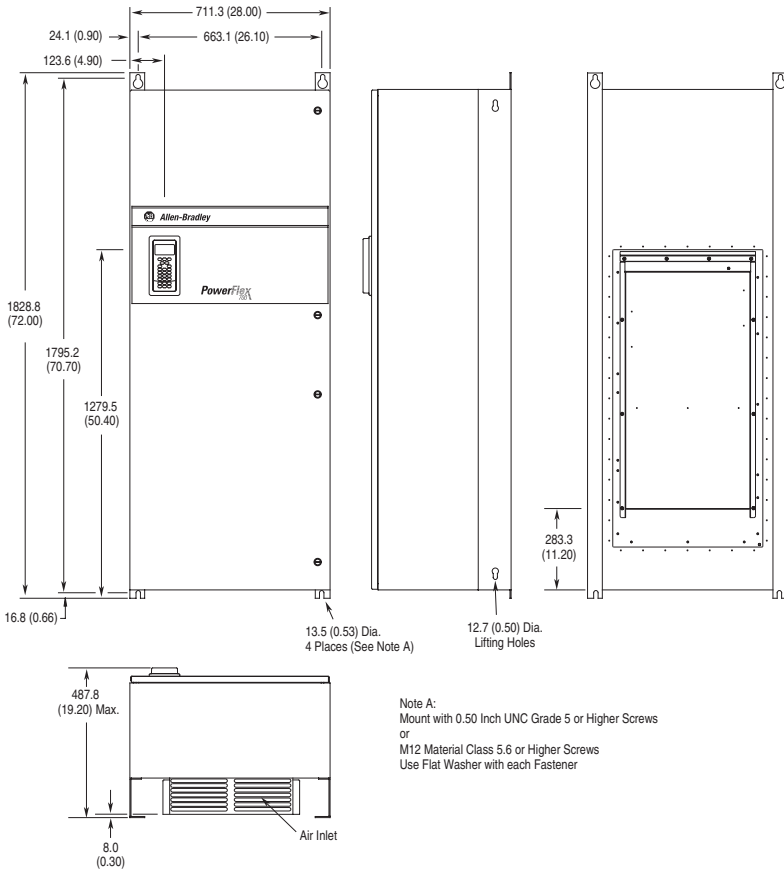
(1) Weights include HIM and Standard I/O.

Figure 3 Frame 5 Flange Mount - Cutout



Dimensions are in millimeters and (inches)

Figure 4 Frame 6 NEMA Type 12 Standalone

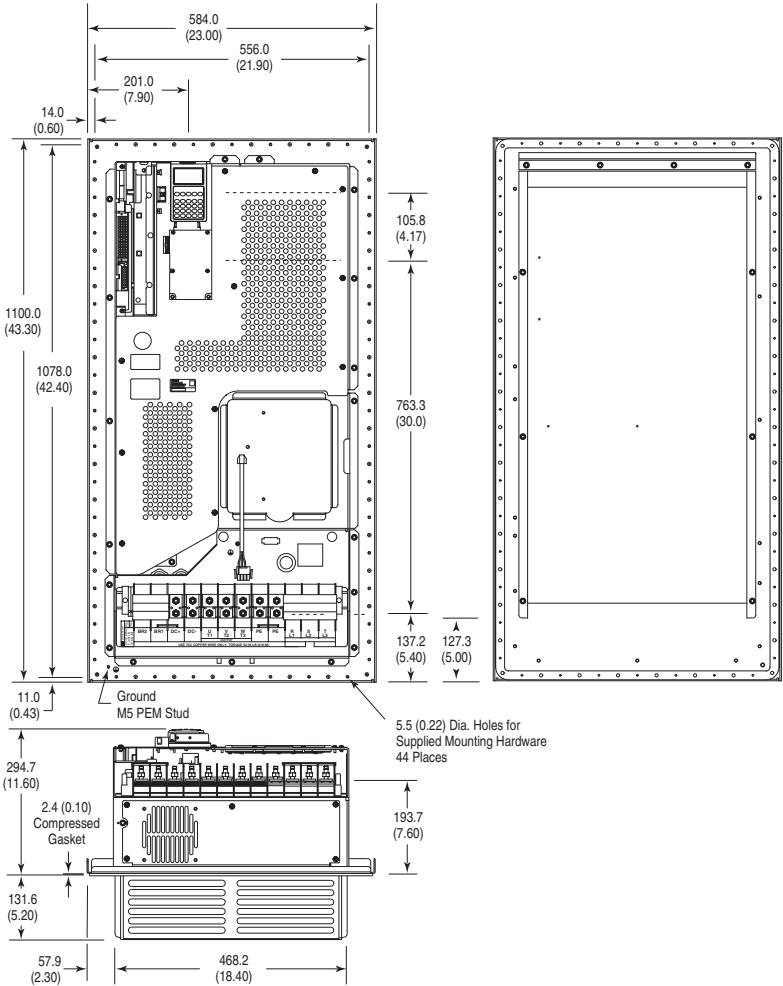


Dimensions are in millimeters and (inches)

Frame	Description	Approx. Weight ⁽¹⁾ kg (lbs.)	
		Drive	Drive & Packaging
6	Standalone	176.90 (390.0)	229.07 (505.0)

(1) Weights include HIM and Standard I/O.

Figure 5 Frame 6 NEMA Type 12 Flange Mount

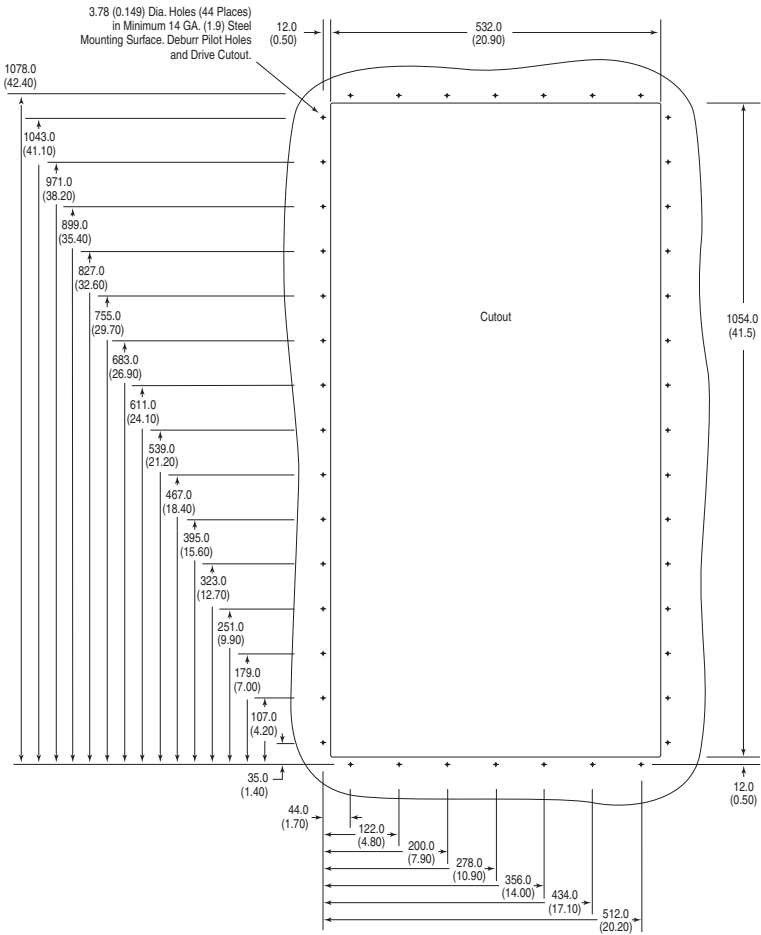


Dimensions are in millimeters and (inches)

Frame	Description	Approx. Weight ⁽¹⁾ kg (lbs.)	
		Drive	Drive & Packaging
6	Flange Mount	99.79 (220.0)	119.75 (264.0)

(1) Weights include HIM and Standard I/O.

Figure 6 Frame 6 Flange Mount - Cutout



Dimensions are in millimeters and (inches)

Ratings

Fuse and ratings information have been added for these drives on the following pages.

Table A.C. 400 Volt AC Input Protection Devices (See page 11 for Notes)

Drive Catalog Number	kW Rating		PWM Freq. kHz	Temp. °C	Input Ratings Amps kVA	Output Amps 1 Min. 3 Sec. Cont.	Dual Element Time Delay Fuse		Non-Time Delay Fuse Min. ⁽¹⁾ Max. ⁽²⁾	Circuit Breaker ⁽³⁾ Max. ⁽⁸⁾	Motor Circuit Protector ⁽⁴⁾ Max. ⁽⁸⁾	140M Mgtor Starter with Adjustable Current Range ⁽⁵⁾⁽⁶⁾ Available Catalog Numbers - 140... ⁽⁷⁾
	ND	HD					Min. ⁽¹⁾	Max. ⁽²⁾				
400 Volt AC Input												
20BC1P3	0	0.37 0.25 4	4	50	1.1	0.77 1.3 1.4	1.9 3 3	3 3 3	6 6 6	15 15 3	3 3 3	M-C2E-B16 - - -
20BC2P1	0	0.75 0.55 4	4	50	1.8	1.2 2.1 2.4	3.2 3 3	6 6 3	8 8 3	15 15 3	3 3 3	M-C2E-B25 M-D8E-B25 - -
20BC3P5	0	1.5 0.75 4	4	50	3.2 2.2 3.5	4.5 6 7	6 6 6	7 6 12	15 15 7	15 15 7	7 7 7	M-C2E-B40 M-D8E-B40 - -
20BC5P0	0	2.2 1.5 4	4	50	4.6 3.2 5.0	5.5 7.5 6	6 10 6	6 10 6	20 20 6	20 20 6	7 7 7	M-C2E-B63 M-D8E-B63 - -
20BC8P7	0	4 2.2 4	4	50	7.9 5.5 8.7	9.9 13.2 15	15 17.5 15	15 17.5 15	30 30 30	30 30 30	15 15 15	M-C2E-C10 M-D8E-C10 M-FBE-C10 - -
20BC011	0	5.5 4 4	4	50	10.8 7.5 11.5	13 17.4 15	15 25 15	15 25 15	45 45 45	45 45 45	15 15 15	M-C2E-C16 M-D8E-C16 M-FBE-C16 - -
20BC015	1	7.5 5.5 4	4	50	14.4 10.0 15.4	17.2 23.1 20	30 30 20	30 30 20	60 60 60	60 60 20	20 20 20	M-C2E-C20 M-D8E-C20 M-FBE-C20 - -
20BC022	1	11 7.5 4	4	50	20.6 14.3 22	24.2 33 30	45 30 45	30 45 30	80 80 80	80 80 30	30 30 30	M-C2E-C25 M-D8E-C25 M-FBE-C25 - -
20BC030	2	15 11 4	4	50	28.4 19.7 30	33 45 35	60 35 60	35 120 35	120 120 120	120 120 50	50 50 50	M-FBE-C32 - - -
20BC037	2	18.5 15 4	4	50	35.0 24.3 37	45 60 45	80 45 80	45 150 45	150 150 150	150 150 60	60 60 60	M-FBE-C45 - - -
20BC043	3	22 18.5 4	4	50	40.7 28.2 43	56 74 60	90 60 90	60 150 60	200 200 200	200 200 100	100 100 100	- - -
20BC056	3	30 22 4	4	50	53 36.7 56	64 86 70	125 70 125	70 200 70	250 250 250	250 250 100	100 100 100	- - -
20BC072	3	37 30 4	4	50	68.9 47.8 72	84 112 84	112 90 150	90 300 90	300 300 300	300 300 150	150 150 150	- - -
20BC085	4	45 - 4	4	45	81.4 56.4 85	94 128 110	200 110 200	110 300 110	300 300 300	300 300 150	150 150 150	- - -
		- 37 4	4	45	68.9 47.8 72	108 144 90	175 90 175	90 275 90	300 300 300	300 300 150	150 150 150	- - -
20BC105	5	55 - 4	4	50 ⁽⁹⁾	100.5 69.6 105	116 158 125	225 125 225	125 400 125	400 400 400	400 400 150	150 150 150	- - -
		- 45 4	4	50 ⁽⁹⁾	81.4 56.4 85	128 170 110	175 110 175	110 300 110	300 300 300	300 300 150	150 150 150	- - -
20BC125	5	55 - 4	4	50 ⁽⁹⁾	121.1 83.9 125	138 163 163	183 163 183	163 500 163	500 500 500	500 500 375	375 375 250	- - -
		- 45 4	4	50 ⁽⁹⁾	91.9 63.7 96	144 168 144	168 125 200	125 375 125	375 375 250	375 375 250	250 250 250	- - -
20BC140	5	75 - 4	4	40 ⁽⁹⁾	136 93.9 140	154 190 200	300 200 300	200 400 200	400 400 400	400 400 250	250 250 250	- - -
		- 55 4	4	40 ⁽⁹⁾	101 69.6 105	157 190 157	190 150 225	150 300 150	300 300 300	300 300 150	150 150 150	- - -
20BC170	6	90 - 4	4	50 ⁽⁹⁾	164 126 170	187 255 250	375 250 375	250 600 250	600 600 500	500 500 250	250 250 250	- - -
		- 75 4	4	50 ⁽⁹⁾	136 103 140	210 280 200	300 200 300	200 550 200	550 550 400	400 400 250	250 250 250	- - -
20BC205	6	110 - 4	4	40 ⁽⁹⁾	199 148 205	220 289 250	450 250 450	250 600 250	600 600 400	400 400 400	400 400 400	- - -
		- 90 4	4	40 ⁽⁹⁾	164 126 170	255 313 250	375 250 375	250 750 250	750 750 500	500 500 250	250 250 250	- - -
20BC260	6	132 - 2	2	45 ⁽⁹⁾	255 177 260	286 390 350	550 350 550	350 600 350	600 600 400	400 400 400	400 400 400	- - -
		- 110 2	2	50 ⁽⁹⁾	199 138 205	308 410 250	450 250 450	250 600 250	600 600 400	400 400 400	400 400 400	- - -

Table A.D. 480 Volt AC Input Protection Devices (See page 11 for Notes)

Drive Catalog Number	HP Rating		PWM Freq. kHz	Temp. °C	Input Ratings		Output Amps		Dual Element Time Delay Fuse		Non-Time Delay Fuse	Circuit Breaker ⁽³⁾	Motor Circuit Protector ⁽⁴⁾	140M Motor Starter with Adjustable Current Range ⁽⁵⁾⁽⁶⁾					
	ND	HD			Amps	kVA	Cont.	1 Min.	3 Sec.	Min. ⁽¹⁾					Max. ⁽²⁾	Max. ⁽⁸⁾	Max. ⁽⁸⁾	Max. ⁽⁸⁾	Available Catalog Numbers - 140... ⁽⁷⁾
480 Volt AC Input																			
20BD1P1	0	0.5	0.33	4	50	0.9	0.7	1.1	1.2	1.6	3	3	3	6	15	3	M-C2E-B16	-	-
20BD2P1	0	1	0.75	4	50	1.6	1.4	2.1	2.4	3.2	3	6	3	8	15	3	M-C2E-B25	-	-
20BD3P4	0	2	1.5	4	50	2.6	2.2	3.4	4.5	6.0	4	8	4	12	15	7	M-C2E-B40	M-D8E-B40	-
20BD5P0	0	3	2	4	50	3.9	3.2	5.0	5.5	7.5	6	10	6	20	30	7	M-C2E-B63	M-D8E-B63	-
20BD8P0	0	5	3	4	50	6.9	5.7	8.0	8.8	12	10	15	10	30	40	15	M-C2E-C10	M-D8E-C10	M-F8E-C10
20BD011	0	7.5	5	4	50	9.5	7.9	11	12.1	16.5	15	20	15	40	40	15	M-C2E-C16	M-D8E-C16	M-F8E-C16
20BD014	1	10	7.5	4	50	12.5	10.4	14	16.5	22	17.5	30	17.5	50	50	20	M-C2E-C16	M-D8E-C16	M-F8E-C16
20BD022	1	15	10	4	50	19.9	16.6	22	24.2	33	25	50	25	80	80	30	M-C2E-C25	M-D8E-C25	M-F8E-C25
20BD027	2	20	15	4	50	24.8	20.6	27	33	44	35	60	35	100	100	50	-	-	M-F8E-C32
20BD034	2	25	20	4	50	31.2	25.9	34	40.5	54	40	70	40	125	125	50	-	-	M-F8E-C45
20BD040	3	30	25	4	50	36.7	30.5	40	51	68	50	90	50	150	150	50	-	-	M-F8E-C45
20BD052	3	40	30	4	50	47.7	39.7	52	60	80	60	110	60	200	200	70	-	-	M-F8E-C30
20BD065	3	50	40	4	50	59.6	49.6	65	78	104	80	125	80	250	250	100	-	-	M-F8E-C45
20BD077	4	60	-	4	50	72.3	60.1	77	85	116	100	170	100	300	300	100	-	-	M-F8E-C45
20BD096	-	50	4	4	50	59.6	49.6	65	98	130	80	125	80	250	250	100	-	-	M-F8E-C45
20BD096	5	75	-	4	50 ⁽⁹⁾	90.1	74.9	96	106	144	125	200	125	350	350	125	-	-	M-F8E-C45
20BD125	5	100	-	4	50 ⁽⁹⁾	117	97.6	125	138	163	150	250	150	500	375	150	-	-	M-F8E-C45
20BD156	-	75	4	4	50 ⁽⁹⁾	90.1	74.9	96	144	168	125	200	125	350	350	125	-	-	M-F8E-C45
20BD156	6	125	-	4	50 ⁽⁹⁾	147	122	156	172	234	200	350	200	600	450	250	-	-	M-F8E-C45
20BD180	-	100	4	4	50 ⁽⁹⁾	131	109	125	188	250	175	250	175	500	375	250	-	-	M-F8E-C45
20BD180	6	150	-	4	50 ⁽⁹⁾	169	141	180	198	270	225	400	225	600	500	250	-	-	M-F8E-C45
20BD248	-	125	4	4	50 ⁽⁹⁾	147	122	156	234	312	200	350	200	600	450	250	-	-	M-F8E-C45
20BD248	6	200	-	2	45 ⁽⁹⁾	233	194	248	273	372	300	550	300	700	700	400	-	-	M-F8E-C45
20BD248	-	150	2	4	50 ⁽⁹⁾	169	141	180	270	360	225	400	225	600	500	250	-	-	M-F8E-C45

Table A.E. 600 Volt AC Input Protection Devices (See [page 11](#) for Notes)

Drive Catalog Number	HP Rating ND LD	PWM Freq. kHz	Temp. °C	Input Ratings Amps kVA	Output Amps Cont. 1 Min. 3 Sec.	Dual Element Time Delay Fuse		Non-Time Delay Fuse	Circuit Breaker ⁽³⁾ Max. ⁽⁶⁾	Motor Circuit Protector ⁽⁴⁾ Max. ⁽⁶⁾	140M Motor Starter with Adjustable Current Range ⁽⁵⁾⁽⁶⁾ Available Catalog Numbers - 140... ⁽⁷⁾
						Min. ⁽¹⁾	Max. ⁽²⁾				
600 Volt AC Input											
20BE1P7	0 1	0.5 4	50	1.3 1.4 1.7 2	2.6 2	2 4	2 6	6 15	3		M-C2E-B16 -
20BE2P7	0 2	1 4	50	2.1 2.7 3.6 4.8	3 3	6 3	3 10	15 15	3		M-C2E-B25 -
20BE3P9	0 3	2 4	50	3.0 3.1 3.9 4.3 5.9 6	4.3 6	9 6	6 15	15 15	7		M-C2E-B40 M-D8E-B40 -
20BE6P1	0 5	3 4	50	5.3 5.5 6.1 6.7 9.2 9	6.7 9	12 9	9 20	20 20	15		M-C2E-B63 M-D8E-B63 -
20BE9P0	0 7.5 5	4 4	50	7.8 8.1 9 9.9 13.5 10	9.9 13.5	10 20	10 35	30 30	15		M-C2E-C10 M-D8E-C10 M-F8E-C10 -
20BE011	1 10 7.5 4	50	9.9 10.2 11 13.5 18 15	10.2 11 13.5 18	15 25	20 40	20 60	50 20	15		M-C2E-C10 M-D8E-C10 M-F8E-C10 -
20BE017	1 15 10 4	50	15.4 16.0 17 18.7 25.5 20	17 18.7 25.5	20 40	20 40	20 60	50 20	20		M-C2E-C16 M-D8E-C16 M-F8E-C16 -
20BE022	2 20 15 4	50	20.2 21.0 22 25.5 34 30	22 25.5 34	30 50	30 50	30 80	80 30	30		M-C2E-C25 M-D8E-C25 M-F8E-C25 -CMN-2500
20BE027	2 25 20 4	50	24.8 25.7 27 33 44 35 60	27 33 44 35	60 35	60 35	100 100	100 50	50		M-F8E-C25 -CMN-2500
20BE032	3 30 25 4	50	29.4 30.5 32 40.5 54 40 70	32 40.5 54	40 70	40 70	125 125	125 50	50		M-F8E-C32 -CMN-4000
20BE041	3 40 30 4	50	37.6 39.1 41 48 64 50 90	41 48 64	50 90	50 90	150 150	150 100	100		M-F8E-C45 -CMN-4000
20BE052	3 50 40 4	50	47.7 49.6 52 61.5 82 60 110	52 61.5 82	60 110	60 110	200 200	200 100	100		-CMN-6300
20BE062	4 60 50 2	50	58.2 60.5 62 78 104 80 125	62 78 104	80 125	80 125	225 225	225 100	100		-CMN-6300
20BE077	5 75 -	2 50 ⁽⁹⁾	72.3 75.1 77 85 116 90 150	75.1 77 85	90 150	90 150	300 300	300 100	100		-CMN-9000
	-	60 2	50 ⁽⁹⁾	58.2 60.5 63 94 126 90 125	63 94 126	90 125	90 250	250 100	100		-CMN-6300
20BE089	5 100 -	2 40 ⁽⁹⁾	92.9 96.6 99 109 126 125 200	96.6 99 109	126 125	200 125	375 375	375 150	150		-
	-	75 2	40 ⁽⁹⁾	72.3 75.1 77 116 138 100 175	77 116 138	100 175	100 300	300 100	100		-CMN-9000
20BE125	6 125 -	2 50 ⁽⁹⁾	117 122 125 138 188 150 250	122 125 138	188 150	250 150	375 375	375 250	250		-
	-	100 2	50 ⁽⁹⁾	93 96.6 99 149 198 125 200	96.6 99 149	198 125	125 375	375 150	150		-
20BE144	6 150 -	2 50 ⁽⁹⁾	135 141 144 158 216 175 300	141 144 158	216 175	300 175	400 400	400 250	250		-
	-	125 2	50 ⁽⁹⁾	117 122 125 188 250 150 275	122 125 188	250 150	275 375	375 250	250		-

Table A.F 690 Volt AC Input Protection Devices (See [page 11](#) for Notes)

Drive Catalog Number	kW Rating		PWM Freq. kHz	Temp. °C	Input Ratings		Output Amps		Dual Element Time Delay Fuse		Non-Time Delay Fuse		Circuit Breaker ⁽³⁾	Motor Circuit Protector ⁽⁴⁾		
	ND	HD			Amps	kVA	1 Min.	3 Sec.	Min. ⁽¹⁾	Max. ⁽²⁾	Min. ⁽¹⁾	Max. ⁽²⁾		Max. ⁽⁸⁾	Max. ⁽⁸⁾	
690 Volt AC Input																
20BF032	5	45	—	4	50 ⁽⁹⁾	46.9	56.1	52	57	78	60	110	60	175	175	—
	—	—	37.5	4	50 ⁽⁹⁾	40.1	48.0	46	69	92	50	90	50	150	150	—
20BF060	5	55	—	4	50 ⁽⁹⁾	57.7	68.9	60	66	90	80	125	80	225	225	—
	—	—	45	4	50 ⁽⁹⁾	46.9	56.1	52	78	104	60	110	60	175	175	—
20BF082	5	75	—	2	50 ⁽⁹⁾	79.0	94.4	82	90	123	100	200	100	375	375	—
	—	—	55	2	50 ⁽⁹⁾	57.7	68.9	60	90	120	80	125	80	225	225	—
20BF098	5	90	—	2	40 ⁽⁹⁾	94.7	113	98	108	127	125	200	125	375	375	—
	—	—	75	2	40 ⁽⁹⁾	79.0	94.4	82	123	140	100	200	100	375	375	—
20BF119	6	110	—	2	50 ⁽⁹⁾	115	137	119	131	179	150	250	150	400	—	—
	—	—	90	2	50 ⁽⁹⁾	94.7	113	98	147	196	125	200	125	375	—	—
20BF142	6	132	—	2	50 ⁽⁹⁾	138	165	142	156	213	175	300	175	450	—	—
	—	—	110	2	50 ⁽⁹⁾	115	137	119	179	238	150	250	150	400	—	—

Notes:

- (1) Minimum protection device size is the lowest rated device that supplies maximum protection without nuisance tripping.
- (2) Maximum protection device size is the highest rated device that supplies drive protection. For US NEC, minimum size is 125% of motor FLA. Ratings shown are maximum.
- (3) Circuit Breaker - inverse time breaker. For US NEC, minimum size is 125% of motor FLA. Ratings shown are maximum.
- (4) Motor Circuit Protector - instantaneous trip circuit breaker. For US NEC minimum size is 125% of motor FLA. Ratings shown are maximum.
- (5) Bulletin 140M with adjustable current range should have the current trip set to the minimum range that the device will not trip.
- (6) Manual Self-Protected (Type E) Combination Motor Controller, UL listed for 208 Wye or Delta, 240 Wye or Delta, 480Y/277 or 600Y/347. Not UL listed for use on 480V or 600V Delta/Delta systems.
- (7) The AIC ratings of the Bulletin 140M Motor Protector may vary. See publication 140M-SG001B-EN-P.
- (8) Maximum allowable rating by US NEC. Exact size must be chosen for each installation.
- (9) UL Type 12/IP54 (flange mount) heatsink ambient temperature rating is 40° C/ambient of unprotected drive portion (inside enclosure) is 55° C. The ambient temperature for the UL Type 12/IP54 Standalone drives is 40° C.

Table A.G 540 Volt DC Input Protection Devices

Drive Catalog Number	Frame	kW Rating		DC Input Ratings		Output Amps			Fuse	Bussmann Style Fuse
		ND	HD	Amps	kW	Cont.	1 Min.	3 Sec.		
540 Volt DC Input										
20BC1P3 ⁽²⁾	1	0.37	0.25	1.3	0.7	1.3	1.4	1.9	3	BUSSMANN_JKS-3
20BC2P1 ⁽²⁾	1	0.75	0.55	2.1	1.1	2.1	2.4	3.2	6	BUSSMANN_JKS-6
20BC3P5 ⁽²⁾	1	1.5	0.75	3.7	2.0	3.5	4.5	6.0	8	BUSSMANN_JKS-8
20BC5P0 ⁽²⁾	1	2.2	1.5	5.3	2.9	5.0	5.5	7.5	10	BUSSMANN_JKS-10
20BC8P7 ⁽²⁾	1	4	3.0	9.3	5.0	8.7	9.9	13.2	20	BUSSMANN_JKS-20
20BC011 ⁽²⁾	1	5.5	4	12.6	6.8	11.5	13	17.4	25	BUSSMANN_JKS-25
20BC015 ⁽²⁾	1	7.5	5.5	16.8	9.1	15.4	17.2	23.1	30	BUSSMANN_JKS-30
20BC022 ⁽²⁾	1	11	7.5	24	13	22	24.2	33	45	BUSSMANN_JKS-45
20BC030 ⁽²⁾	2	15	11	33.2	17.9	30	33	45	60	BUSSMANN_JKS-60
20BC037 ⁽²⁾	2	18.5	15	40.9	22.1	37	45	60	80	BUSSMANN_JKS-80
20BC043 ⁽²⁾	3	22	18.5	47.5	25.7	43	56	74	90	BUSSMANN_JKS-90
20BC056 ⁽²⁾	3	30	22	61.9	33.4	56	64	86	110	BUSSMANN_JKS-110
20BC072 ⁽²⁾	3	37	30	80.5	43.5	72	84	112	150	BUSSMANN_JKS-150
20BC085 ⁽²⁾	4	45	–	95.1	51.3	85	94	128	200	BUSSMANN_JKS-200
		–	37	80.5	43.5	72	108	144	150	BUSSMANN_JKS-150
20BH105 ⁽¹⁾⁽²⁾	5	55	–	117.4	63.4	105	116	158	200	BUSSMANN_JKS-200
		–	45	95.1	51.3	85	128	170	200	BUSSMANN_JKS-200
20BH125 ⁽¹⁾⁽²⁾	5	55	–	139.8	75.5	125	138	163	225	BUSSMANN_JKS-225
		–	45	91.9	63.7	96	144	168	150	
20BH140 ⁽¹⁾⁽²⁾	6	75	–	158.4	85.6	140	154	190	300	BUSSMANN_JKS-300
		–	55	117.4	63.4	105	158	190	200	BUSSMANN_JKS-200
20BH170 ⁽¹⁾⁽²⁾	6	90	–	192.4	103.9	170	187	255	350	BUSSMANN_JKS-350
		–	75	158.4	85.6	140	210	280	300	BUSSMANN_JKS-300
20BH205 ⁽¹⁾⁽²⁾	6	110	–	232	125.3	205	220	289	400	BUSSMANN_JKS-400
		–	90	192.4	103.9	170	255	313	350	BUSSMANN_JKS-350

(1) Also applies to "P" voltage class.

(2) UL Type 12/IP54 (flange mount) heatsink ambient temperature rating is 40° C/ambient of unprotected drive portion (inside enclosure) is 55° C. The ambient temperature for the UL Type 12/IP54 Standalone drives is 40° C.

Table A.H 650 Volt DC Input Protection Devices

Drive Catalog Number	Frame	kW Rating		DC Input Ratings		Output Amps			Fuse	Bussmann Style Fuse
		ND	HD	Amps	kW	Cont.	1 Min.	3 Sec.		
650 Volt DC Input										
20BD1P1 ⁽²⁾	0	0.5	0.33	1.0	0.6	1.1	1.2	1.6	6	BUSSMANN_JKS-6
20BD2P1 ⁽²⁾	0	1	0.75	1.9	1.2	2.1	2.4	3.2	6	BUSSMANN_JKS-6
20BD3P4 ⁽²⁾	0	2	1.5	3.0	2.0	3.4	4.5	6.0	6	BUSSMANN_JKS-6
20BD5P0 ⁽²⁾	0	3	2	4.5	2.9	5.0	5.5	7.5	10	BUSSMANN_JKS-10
20BD8P0 ⁽²⁾	0	5	3	8.1	5.2	8.0	8.8	12	15	BUSSMANN_JKS-15
20BD011 ⁽²⁾	0	7.5	5	11.1	7.2	11	12.1	16.5	20	BUSSMANN_JKS-20
20BD014 ⁽²⁾	1	10	7.5	14.7	9.5	14	16.5	22	30	BUSSMANN_JKS-30
20BD022 ⁽²⁾	1	15	10	23.3	15.1	22	24.2	33	45	BUSSMANN_JKS-45
20BD027 ⁽²⁾	2	20	15	28.9	18.8	27	33	44	60	BUSSMANN_JKS-60
20BD034 ⁽²⁾	2	25	20	36.4	23.6	34	40.5	54	70	BUSSMANN_JKS-70
20BD040 ⁽²⁾	3	30	25	42.9	27.8	40	51	68	80	BUSSMANN_JKS-80
20BD052 ⁽²⁾	3	40	30	55.7	36.1	52	60	80	100	BUSSMANN_JKS-100
20BD065 ⁽²⁾	3	50	40	69.7	45.4	65	78	104	150	BUSSMANN_JKS-150
20BD077 ⁽²⁾	4	60	–	84.5	54.7	77	85	116	150	BUSSMANN_JKS-150
		–	50	67.9	45.4	65	98	130	150	BUSSMANN_JKS-150
20BR096 ⁽¹⁾⁽²⁾	5	75	–	105.3	68.3	96	106	144	200	BUSSMANN_JKS-200
		–	60	84.5	54.7	77	116	154	150	BUSSMANN_JKS-150
20BR125 ⁽¹⁾⁽²⁾	5	100	–	137.1	88.9	125	138	163	250	BUSSMANN_JKS-250
		–	75	105.3	68.3	96	144	168	200	BUSSMANN_JKS-200
20BR156 ⁽¹⁾⁽²⁾	6	125	–	171.2	110.9	156	172	234	300	BUSSMANN_JKS-300
		–	100	137.1	88.9	125	188	250	250	BUSSMANN_JKS-250
20BR180 ⁽¹⁾⁽²⁾	6	150	–	204.1	132.2	180	198	270	400	BUSSMANN_JKS-400
		–	125	171.2	110.9	156	234	312	300	BUSSMANN_JKS-300

(1) Also applies to “J” voltage class.

(2) UL Type 12/IP54 (flange mount) heatsink ambient temperature rating is 40° C/ambient of unprotected drive portion (inside enclosure) is 55° C. The ambient temperature for the UL Type 12/IP54 Standalone drives is 40° C.

www.rockwellautomation.com

Corporate Headquarters

Rockwell Automation, 777 East Wisconsin Avenue, Suite 1400, Milwaukee, WI, 53202-5302 USA, Tel: (1) 414.212.5200, Fax: (1) 414.212.5201

Headquarters for Allen-Bradley Products, Rockwell Software Products and Global Manufacturing Solutions

Americas: Rockwell Automation, 1201 South Second Street, Milwaukee, WI 53204-2496 USA, Tel: (1) 414.382.2000, Fax: (1) 414.382.4444
Europe/Middle East/Africa: Rockwell Automation SAINV, Vorstlaan/Boulevard du Souverain 36, 1170 Brussels, Belgium, Tel: (32) 2 663 0600, Fax: (32) 2 663 0640
Asia Pacific: Rockwell Automation, Level 14, Core F, Cyberport 3, 100 Cyberport Road, Hong Kong, Tel: (852) 2887 4788, Fax: (852) 2508 1846

Headquarters for Dodge and Reliance Electric Products

Americas: Rockwell Automation, 6040 Ponders Court, Greenville, SC 29615-4617 USA, Tel: (1) 864.297.4800, Fax: (1) 864.281.2433
Europe/Middle East/Africa: Rockwell Automation, Herman-Heinrich-Gossen-Strasse 3, 50858 Köln, Germany, Tel: 49 (0) 2234 379410, Fax: 49 (0) 2234 3794164
Asia Pacific: Rockwell Automation, 55 Newton Road, #11-01/02 Revenue House, Singapore 307987, Tel: (65) 6356-9077, Fax: (65) 6356-9011

U.S. Allen-Bradley Drives Technical Support

Tel: (1) 262.512.8176, Fax: (1) 262.512.2222, Email: support@drives.ra.rockwell.com, Online: www.ab.com/support/abdrives