



## ▶ Hybrid stepper motors

**6600-15**

- Step angle ..... 1.8°
- Diameter ..... 57.2 mm
- Weight ..... 370 g
- Holding torque ... 540/385 mNm

The hybrid stepper motor comes into its own where torque at low speed, positioning, and accuracy are determining factors.

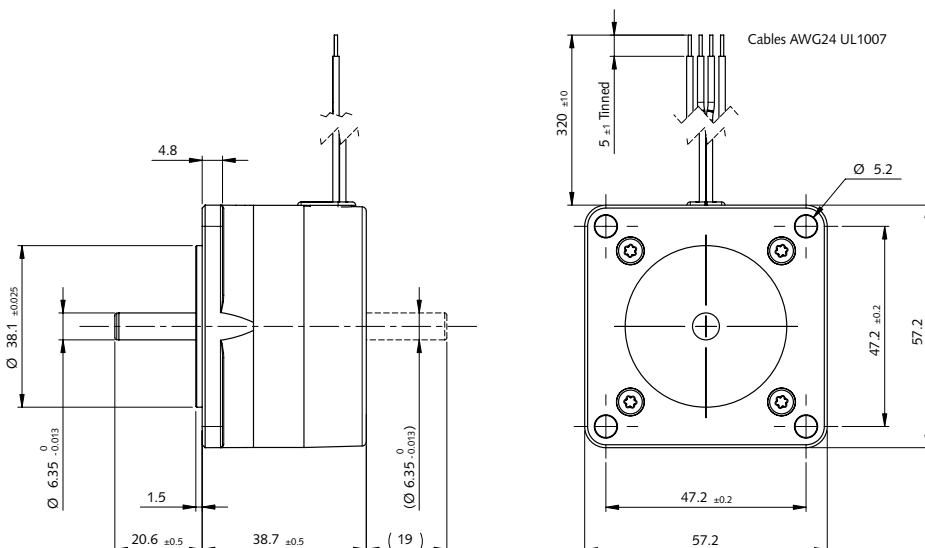
### ▶ Technical data

	Part N°	Phase resistance [Ω]	Phase inductance [mH]	Phase current [A]	Holding torque [mNm]	Nominal power [W]
<b>Bipolar</b>	6600-15-2-1.6	1.6	3.5	1.5	540	7.2
<b>Unipolar</b>	6600-15-4-1.6	1.6	1.7	1.5	385	7.2
	6600-15-4-13.5	13.5	13.9	0.52	385	7.2

Steps/rev.	200
Step accuracy	± 5 %
Rotor inertia	131 gcm <sup>2</sup>
Insulation class	B 130° C
Protection	DIN 40050 IP 30
Test voltage	500 VAC
Detent torque	26 mNm

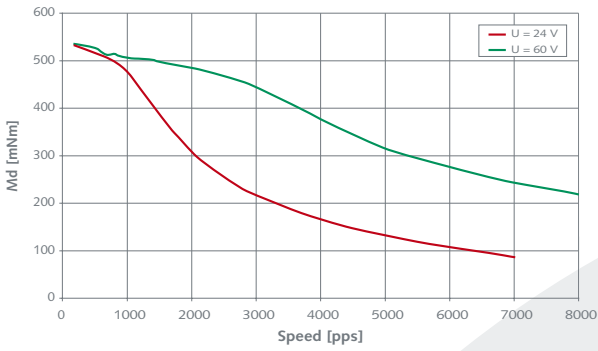
### ▶ Dimensions

Drawing not to scale. All dimensions in mm.



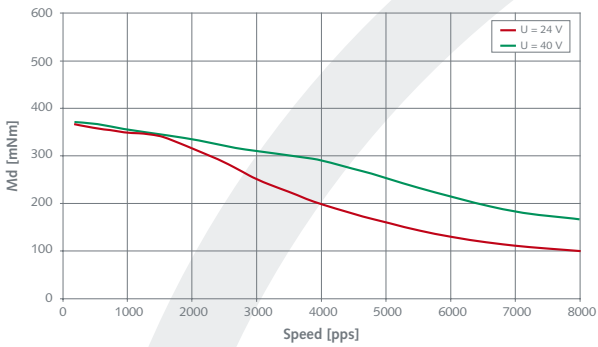
## ▶ Dynamic characteristics

### • 6600-15-2-1.6

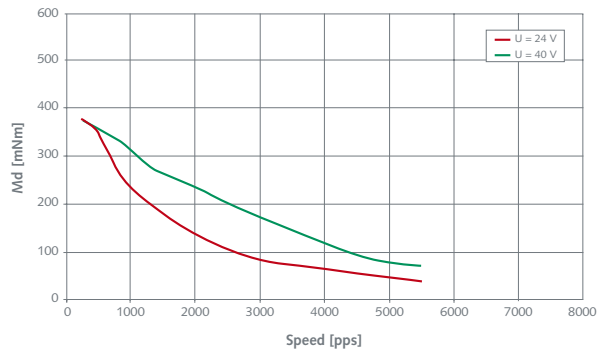


[pps] = pulses per second

### • 6600-15-4-1.6

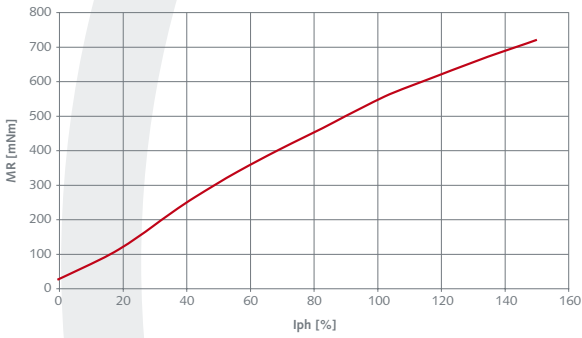


### • 6600-15-4-13.5

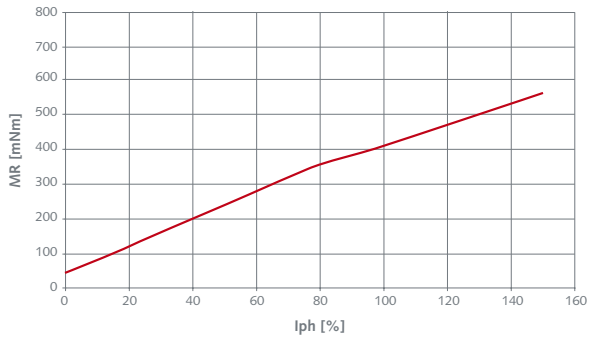


## ▶ Static characteristics

### • 6600-15-2 Series

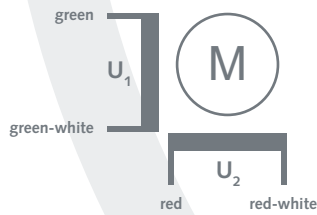


### • 6600-15-4 Series

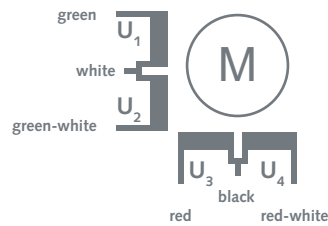


## ▶ Electrical Interface

### • Bipolar



### • Unipolar



ACP&D Limited  
86 Rose Hill Road,  
Ashton-under-Lyne,  
Lancashire,  
England,  
OL6 8YF.

Tel: +44 (0)161 343 1884  
Fax: +44 (0)161 343 7773  
e-mail: sales@acpd.co.uk  
Websites: www.acpd.com &  
www.acpd.co.uk

