

## ▶ Hybrid stepper motors

### 6600-30

- Step angle ..... 1.8°
- Diameter ..... 57.2 mm
- Weight ..... 950 g
- Holding torque .. 1950/1400 mNm

The hybrid stepper motor comes into its own where torque at low speed, positioning, and accuracy are determining factors.

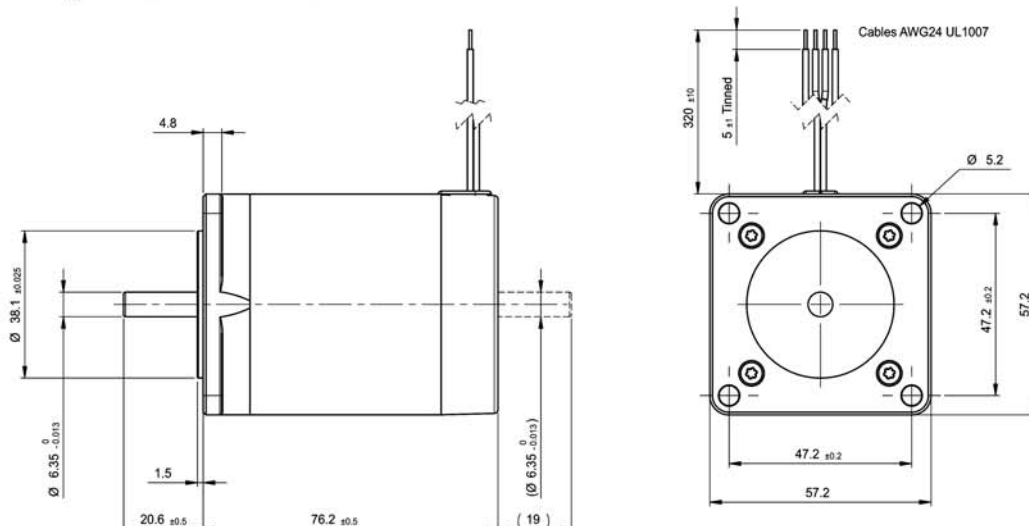
### ▶ Technical data

	Part N°	Phase resistance [Ω]	Phase inductance [mH]	Phase current [A]	Holding torque [mNm]	Nominal power [W]
Bipolar	6600-30-2-0.37	0.37	1.5	4.7	1950	16.5
	6600-30-2-2.6	2.6	9	1.8	1950	16.5
Unipolar	6600-20-4-0.37	0.37	0.6	4.7	1400	16.5
	6600-30-4-2.6	2.6	5	1.8	1400	16.5

Steps/rev.	200
Step accuracy	± 5 %
Rotor inertia	425 gcm <sup>2</sup>
Insulation class	B 130° C
Protection	DIN 40050 IP 30
Test voltage	500 VAC
Detent torque	70 mNm

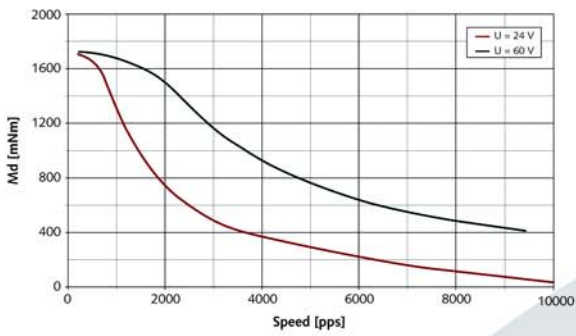
### ▶ Dimensions

Drawing not to scale. All dimensions in mm.

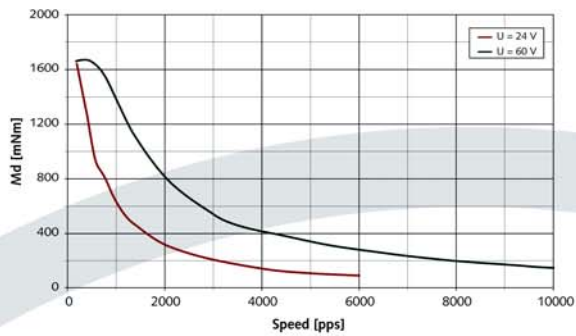


► Dynamic characteristics

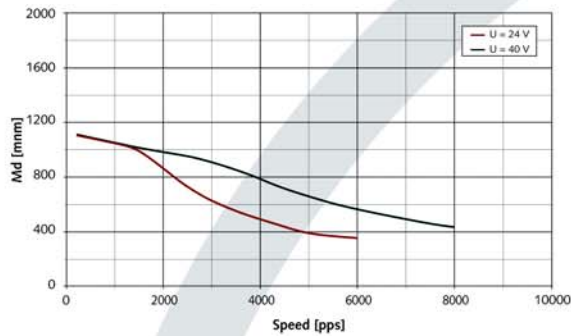
• 6600-30-2-0.37



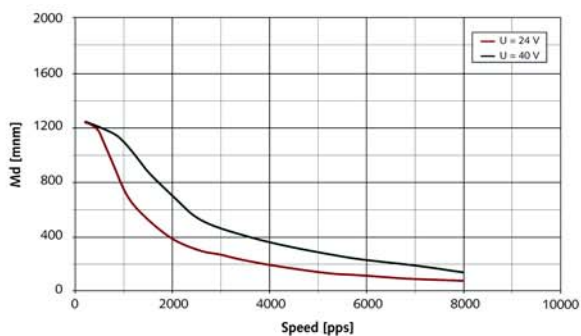
• 6600-30-2-2.6



• 6600-30-4-0.37



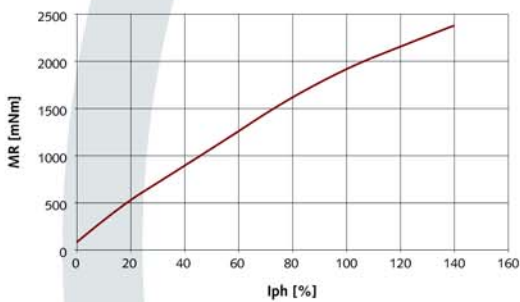
• 6600-30-4-2.6



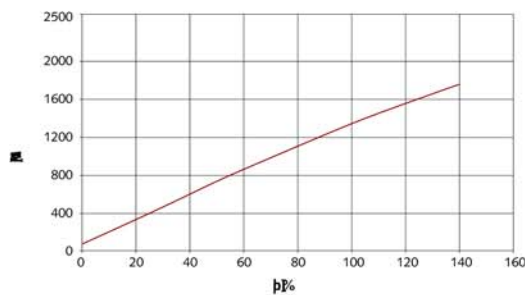
[pps] = pulses per second

► Static characteristics

• 6600-30-2 Series

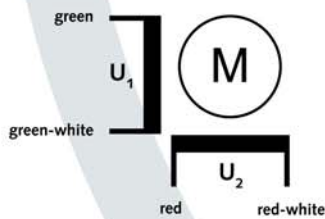


• 6600-30-4 Series

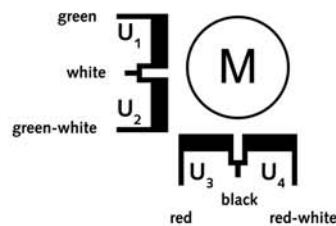


► Electrical Interface

• Bipolar



• Unipolar



Special requirements upon customer specifications. Right to change reserved.

< 1.0 >

ACP&D Limited  
86 Rose Hill Road,  
Ashton-under-Lyne,  
Lancashire,  
England,  
OL6 8YF.

Tel: +44 (0)161 343 1884  
Fax: +44 (0)161 343 7773  
e-mail: sales@acpd.co.uk  
Websites: www.acpd.com &  
www.acpd.co.uk

